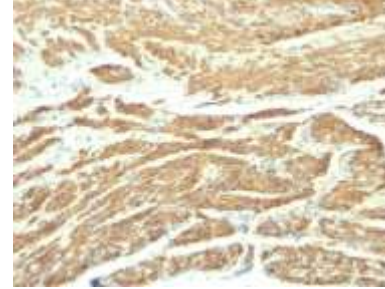


Anti-Caldesmon Antibody (SPM168)

| | |
|----------------------------|--|
| CATALOG NO: | A1452-100 |
| ALTERNATIVE NAMES: | CAD, CALD1, Caldesmon 1 Isoform 1, Caldesmon 1 Isoform 2, Caldesmon 1 Isoform 3, Caldesmon 1 Isoform 4, Caldesmon 1 Isoform 5, CDM, HCAD, LCAD, NAG22 |
| AMOUNT: | 100 µg |
| IMMUNOGEN: | Crude human uterus extract |
| HOST/ISOTYPE: | Mouse IgG1, kappa |
| CLONALITY: | Monoclonal |
| CLONE: | SPM168 |
| MOL WEIGHT: | 150 kDa |
| SPECIES REACTIVITY: | Human |
| PURIFICATION: | Protein A/G purified |
| FORM: | Liquid |
| FORMULATION: | Supplied in 10 mM PBS with 0.05% BSA & 0.05% azide |
| STORAGE CONDITIONS: | Shipped at 4°C. For long term storage store at -20°C in small aliquots to prevent freeze-thaw cycles |
| DESCRIPTION: | Recognizes a protein of 150 kDa, which is identified as the high molecular weight variant of Caldesmon. Two closely related variants of human caldesmon have been identified which are different in their electrophoretic mobility and cellular distribution. The h-caldesmon variant (120-150 kDa) is predominantly expressed in smooth muscle whereas l-caldesmon (70-80 kDa) is found in non- muscle tissue and cells. Neither of the two variants has been detected in skeletal muscle. This MAb recognizes only the 150 kDa variant (h-caldesmon) in Western blots of human aortic media extracts and is unreactive with fibroblast extracts from cultivated human foreskin. Caldesmon is a developmentally regulated protein involved in smooth muscle and non-muscle contraction. |
| APPLICATION: | FC: 0.5-1 µg/1X10 ⁶ cells IF: 1-2 µg/ml IHC: 0.25-0.5 µg/ml for 30 minutes at RT (Staining of formalin-fixed tissues requires boiling tissue sections in 10mM citrate buffer, pH 9.0, for 10-20 min followed by cooling at RT for 20 minutes) |
| | Note: This information is only intended as a guide. The optimal dilutions must be determined by the user. |



Formalin-fixed, paraffin-embedded human Uterus stained with Caldesmon Monoclonal Antibody

RELATED PRODUCTS:

- Anti-Bcl-2 Antibody (100/D5 + 124) (Cat. No. A1435)
- Anti-Bcl-6 Antibody (BCL6/1475) (Cat. No. A1436)
- Anti-Bcl-6 Antibody (BCL6/1527) (Cat. No. A1437)
- Anti-Bax Antibody (BAX/962) (Cat. No. A1434)
- Anti-Adipophilin Antibody (ADFP/1494) (Cat. No. A1422)
- Anti-AFP Antibody (C3) (Cat. No. A1423)
- Anti-ALDH1A1 Antibody (ALDH1A1/1381) (Cat. No. A1424)
- Anti-ALK Antibody (ALK/1503) (Cat. No. A1425)
- Anti-Alkaline Phosphatase Antibody (ALPL/597) (Cat. No. A1426)
- Anti-Alpha-1-Antitrypsin Antibody (AAT/1378) (Cat. No. A1427)

FOR RESEARCH USE ONLY! Not to be used on humans.