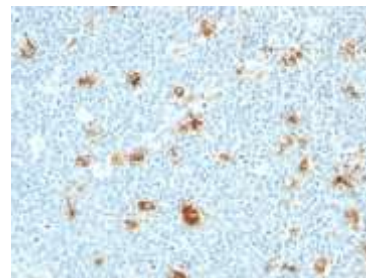


Anti-Calgranulin B Antibody (CAGB/426)

CATALOG NO:	A1453-100
ALTERNATIVE NAMES:	Leukocyte L1 complex heavy chain; CAGB; Calgranulin-B; Calprotectin L1H subunit; CFAG; CGLB; Cystic fibrosis antigen B; L1AG; Migration inhibitory factor-related protein 14; MRP14; S100A9; S100 calcium-binding protein A9
AMOUNT:	100 µg
IMMUNOGEN:	Recombinant human CAGB protein
HOST/ISOTYPE:	Mouse IgM, kappa
CLONALITY:	Monoclonal
CLONE:	CAGB/426
MOL WEIGHT:	14 kDa
SPECIES REACTIVITY:	Human
PURIFICATION:	Purified from Bioreactor Concentrate
FORM:	Liquid
FORMULATION:	Supplied in 1 mM PBS with 0.05% BSA & 0.05% azide
STORAGE CONDITIONS:	Shipped at 4°C. For long term storage store at -20°C in small aliquots to prevent freeze-thaw cycles
DESCRIPTION:	Recognizes a 12-14 kDa doublet of Calgranulin A/B (also known as S100A8/A9 or MRP-8/14); expressed by granulocytes, monocytes and by tissue macrophages. The protein encoded by this gene is a member of the S100 family of proteins containing 2 EF-hand calcium-binding motifs. S100 proteins are localized in the cytoplasm and/or nucleus of a wide range of cells, and involved in the regulation of a number of cellular processes such as cell cycle progression and differentiation. Altered expression of this protein is associated with the disease cystic fibrosis. This MAb reacts with neutrophils, monocytes, macrophages, and squamous mucosal epithelia and has been shown as an important marker for identifying macrophages in tissue sections.
APPLICATION:	FC: 0.5-1 µg/1X10 ⁶ cells IF: 0.5-1 µg/ml IHC: 0.5-1 µg/ml for 30 minutes at RT (Staining of formalin-fixed tissues requires boiling tissue sections in 10mM citrate buffer, pH 6.0, for 10-20 min followed by cooling at RT for 20 minutes)

Note: This information is only intended as a guide. The optimal dilutions must be determined by the user.



Formalin-fixed, paraffin-embedded human Tonsil stained with Calgranulin B Monoclonal Antibody

RELATED PRODUCTS:

- Anti-Bcl-2 Antibody (100/D5 + 124) (Cat. No. A1435)
- Anti-Bcl-6 Antibody (BCL6/1475) (Cat. No. A1436)
- Anti-Bcl-6 Antibody (BCL6/1527) (Cat. No. A1437)
- Anti-Bax Antibody (BAX/962) (Cat. No. A1434)
- Anti-Adipophilin Antibody (ADFP/1494) (Cat. No. A1422)
- Anti-AFP Antibody (C3) (Cat. No. A1423)
- Anti-ALDH1A1 Antibody (ALDH1A1/1381) (Cat. No. A1424)
- Anti-ALK Antibody (ALK/1503) (Cat. No. A1425)
- Anti-Alkaline Phosphatase Antibody (ALPL/597) (Cat. No. A1426)
- Anti-Alpha-1-Antitrypsin Antibody (AAT/1378) (Cat. No. A1427)

FOR RESEARCH USE ONLY! Not to be used on humans.