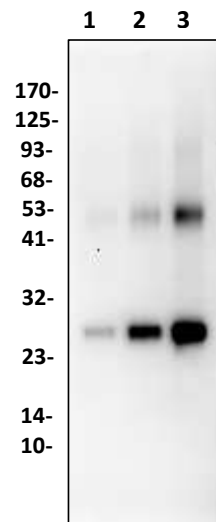


Anti-PD-L1 Antibody

CATALOG NO:	A1454-30T 30 µg (Trial size) A1454-100 100 µg
ALTERNATIVE NAMES:	PD-L1, CD274, B7-H1, PDCD1L1, PDCD1LG1
CONCENTRATION:	0.5 mg/ml
IMMUNOGEN:	Recombinant human PD-L1
INTERNAL ID:	BV-Q75
HOST/ISOTYPE:	Rabbit IgG
PURIFICATION:	Affinity purified rabbit IgG
FORM:	Liquid
FORMULATION:	In PBS pH 7.2, containing 30% glycerol, 0.5% BSA, 5 mM EDTA and 0.03% Proclin
SPECIES REACTIVITY:	Human
STORAGE CONDITIONS:	Store at -20°C. Avoid repeated freeze/thaw cycles.
DESCRIPTION:	Programmed death 1 ligand 1 (PD-L1) also known as cluster of differentiation (CD274) or B7 homolog 1 (B7-H1), is a member of the growing B7 family of immune molecules and is involved in the regulation of cellular and humoral immune responses. B7-H1 is a cell surface immunoglobulin superfamily with two Ig-like domains within the extracellular region and a short cytoplasmic domain. PD-L1 is highly expressed in the heart, skeletal muscle, placenta and lung and weakly expressed in the thymus, spleen, kidney and liver. PD-L1 is expressed on activated T-cells, B-cells, dendritic cells, keratinocytes and monocytes. PD-L1 is up-regulated on T- and B-cells, dendritic cells, keratinocytes and monocytes after LPS and IFNG activation and up-regulated in B-cells activated by surface Ig cross-linking. PD-L1 is involved in the costimulatory signal, essential for T-cell proliferation and production of IL10 and IFNG, in an IL2-dependent and a PDCD1-independent manner.
APPLICATION:	Western blot: 1-4 µg

Note: This information is only intended as a guide. The optimal dilutions must be determined by the user.



Western blot analysis of PD-L1 antibody in:

Lane 1: PD-L1 human recombinant 2 ng
Lane 2: PD-L1 human recombinant 10 ng
Lane 3: PD-L1 human recombinant 50 ng

RELATED PRODUCTS:

- PD-L1/CD274 (Human) ELISA Kit (**Cat. No. K4155-100**)
- PD-1/PD-L1 Inhibitor 2 (**Cat. No. B1050-5,-25**)
- Human CellExp™ PD-L1 /CD274 /B7-H1, human recombinant (**Cat. No. 7429-10**)
- Human CellExp™ PD-L1 /CD274 /B7-H1, mouse recombinant (**Cat. No. 7428-10,-50**)
- Human CellExp™ PD-L1 /PDCD1, human recombinant (**Cat. No. 7498-10,-50,-1000**)

FOR RESEARCH USE ONLY! Not to be used on humans.