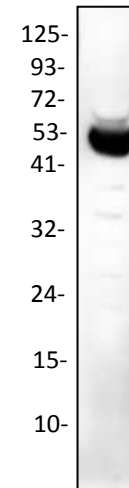


## Anti-TGF- $\beta$ 1 Antibody

<b>CATALOG NO:</b>	A1456-30T 30 $\mu$ g (Trial size) A1456-100 100 $\mu$ g
<b>ALTERNATIVE NAMES:</b>	Transforming growth factor beta-1, TGF-beta-1
<b>CONCENTRATION:</b>	0.5 mg/ml
<b>IMMUNOGEN:</b>	Human recombinant TGF- $\beta$ 1
<b>INTERNAL ID:</b>	BV-Q19
<b>HOST/ISOTYPE:</b>	Rabbit IgG
<b>PURIFICATION:</b>	Affinity purified rabbit IgG
<b>FORM:</b>	Liquid
<b>FORMULATION:</b>	In PBS pH 7.2, containing 30% glycerol, 0.5% BSA, 5 mM EDTA and 0.03% proclin
<b>SPECIES REACTIVITY:</b>	Human, Mouse, Rat
<b>STORAGE CONDITIONS:</b>	Store at -20°C. Avoid repeated freeze/thaw cycles.
<b>DESCRIPTION:</b>	Transforming growth factor-betas (TGF- $\beta$ s) mediate many cell-cell interactions that occur during embryonic development. Three TGF $\beta$ s have been identified in mammals. TGF-Beta 1, TGF-Beta 2 and TGF-Beta 3 are each synthesized as precursor proteins that are very similar in that each is cleaved to yield a 112 amino acid polypeptide that remains associated with the latent portion of the molecule. TGF-beta 1 is involved in hematopoiesis and endothelial differentiation.
<b>APPLICATION:</b>	Western blot: 1-4 $\mu$ g

**Note:** This information is only intended as a guide. The optimal dilutions must be determined by the user.



Western blot analysis of TGF- $\beta$ 1 antibody in rat kidney lysate

### RELATED PRODUCTS:

- TGF- $\beta$ 1 Antibody (Cat. No. 5559)
- TGF-beta1, human recombinant (Cat. No. 4342)
- Anti-TGF-b1 Antibody (3D9) (Cat. No. A1338)
- TGF-beta1 (rat) ELISA Kit (Cat. No. K4344)
- TGF-beta1 (mouse) ELISA Kit (Cat. No. K4343)
- TGF-beta1 (human) ELISA Kit (Cat. No. K4342)

**FOR RESEARCH USE ONLY! Not to be used on humans.**