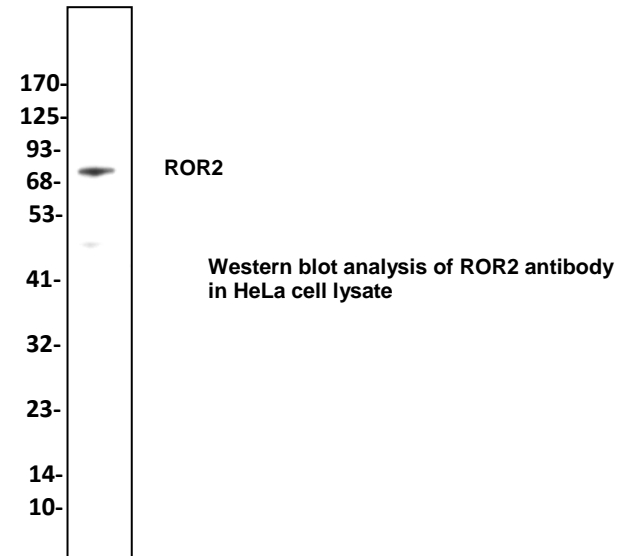


## Anti-ROR2 Antibody

<b>CATALOG NO:</b>	A1460-30T 30 µg (Trial size) A1460-100 100 µg
<b>ALTERNATIVE NAMES:</b>	ROR2, NTRKR2, Tyrosine-protein kinase transmembrane receptor ROR2; Neurotrophic tyrosine kinase, receptor-related 2
<b>CONCENTRATION:</b>	0.5 mg/ml
<b>IMMUNOGEN:</b>	Synthetic peptide near N terminal
<b>INTERNAL ID:</b>	BV-P65
<b>HOST/ISOTYPE:</b>	Rabbit IgG
<b>PURIFICATION:</b>	Affinity purified rabbit IgG
<b>FORM:</b>	Liquid
<b>FORMULATION:</b>	In PBS pH 7.2, containing 30% glycerol, 0.5% BSA, 5 mM EDTA and 0.03% proclin
<b>SPECIES REACTIVITY:</b>	Human
<b>STORAGE CONDITIONS:</b>	Store at -20°C. Avoid repeated freeze/thaw cycles.
<b>DESCRIPTION:</b>	Tyrosine-protein kinase receptor which may be involved in the early formation of the chondrocytes. It seems to be required for cartilage and growth plate development. Phosphorylates YWHAB, leading to induction of osteogenesis and bone formation. In contrast, has also been shown to have very little tyrosine kinase activity in vitro. May act as a receptor for wnt ligand WNT5A which may result in the inhibition of WNT3A-mediated signaling. ROR2 antibody also can recognize Receptor tyrosine kinase-like orphan receptor 2, isoform CRA_b.
<b>APPLICATION:</b>	Western blot: 1-4 µg

**Note:** This information is only intended as a guide. The optimal dilutions must be determined by the user.



### RELATED PRODUCTS:

- Human CellExp™ ROR2 / NTRKR2, Mouse Recombinant (**Cat. No. P1180**)
- ROR2 Antibody (CT) (**Cat. No. 6701**)
- ROR2 Antibody (NT) (**Cat. No. 6700**)
- ROR2 Antibody (**Cat. No. 6702**)
- Human CellExp™ ROR2, Fc Tag, Human Recombinant (**Cat. No. P1255**)
- Human CellExp™ ROR2, Human Recombinant (**Cat. No. P1254**)

**FOR RESEARCH USE ONLY! Not to be used on humans.**