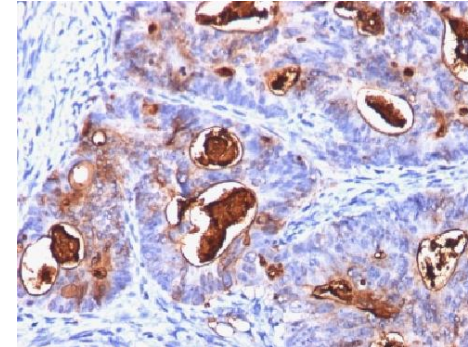


## Anti-Carcinoembryonic Antigen Antibody (C66/1260)

<b>CATALOG NO:</b>	A1464-100
<b>ALTERNATIVE NAMES:</b>	Carcinoembryonic Antigen-related Cell Adhesion Molecule 5, CEACAM5, CD66, Biliary Glycoprotein (BGP-1)
<b>AMOUNT:</b>	100 µg
<b>IMMUNOGEN:</b>	Purified human CEA protein
<b>HOST/ISOTYPE:</b>	Mouse IgG2b, kappa
<b>CLONALITY:</b>	Monoclonal
<b>CLONE:</b>	C66/1260
<b>MOL WEIGHT:</b>	80-200 kDa
<b>SPECIES REACTIVITY:</b>	Human
<b>PURIFICATION:</b>	Protein A/G purified
<b>FORM:</b>	Liquid
<b>FORMULATION:</b>	Supplied in 10 mM PBS with 0.05% BSA & 0.05% azide
<b>STORAGE CONDITIONS:</b>	Shipped at 4°C. For long term storage store at -20°C in small aliquots to prevent freeze-thaw cycles
<b>DESCRIPTION:</b>	This antibody recognizes proteins of 80-200kDa, identified as different members of CEA family. CEA is synthesized during development in the fetal gut and is re-expressed in increased amounts in intestinal carcinomas and several other tumors. This MAb reacts with nonspecific cross-reacting antigen (NCA). It shows no reaction with a variety of normal tissues and is suitable for staining of formalin/paraffin tissues. CEA is not found in benign glands, stroma, or malignant prostatic cells. Antibody to CEA is useful in detecting early foci of gastric carcinoma and in distinguishing pulmonary adenocarcinomas (60-70% are CEA+) from pleural mesotheliomas (rarely or weakly CEA+). Anti-CEA positivity is seen in adenocarcinomas from the lung, colon, stomach, esophagus, pancreas, gallbladder, urachus, salivary gland, ovary, and endocervix.
<b>APPLICATION:</b>	FC: 0.5-1 µg/1X10 <sup>6</sup> cells IF: 1-2 µg/ml IHC: 1-2 µg/ml for 30 minutes at RT (Staining of formalin-fixed tissues requires boiling tissue sections in 10mM citrate buffer, pH 6.0, for 10-20 min followed by cooling at RT for 20 minutes)

**Note: This information is only intended as a guide. The optimal dilutions must be determined by the user.**



**Formalin-fixed, paraffin-embedded human Colon Carcinoma stained with CEA Monoclonal Antibody (C66/1260)**

### RELATED PRODUCTS:

- Anti-CEA Antibody (3C5C10) (Cat. No. A1357)
- Anti-CEA Antibody (1A5C3) (Cat. No. A1356)
- Carcinoembryonic Antigen (CEA) (human) ELISA Kit (Cat. No. K4805)
- Anti-Carcinoembryonic antigen (Arcitumomab), Human IgG1 Antibody (Cat. No. A1096)

**FOR RESEARCH USE ONLY! Not to be used on humans.**