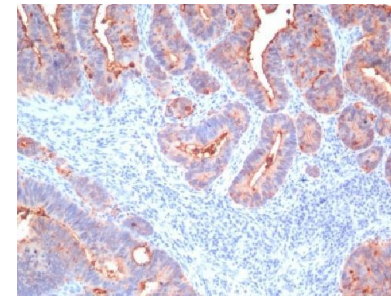


Anti-Carcinoembryonic Antigen, pan Antibody (Cocktail)

CATALOG NO:	A1465-100
ALTERNATIVE NAMES:	Carcinoembryonic Antigen-related Cell Adhesion Molecule 5, CEACAM5, CD66, Biliary Glycoprotein (BGP-1)
AMOUNT:	100 µg
IMMUNOGEN:	Recombinant full-length human CEA protein (C66/195; C66/261; C66/1009 & C66/1030)
HOST/ISOTYPE:	Mouse IgGs
CLONALITY:	Monoclonal
CLONE:	Cocktail (C66/195; C66/261; C66/1009 & C66/1030)
MOL WEIGHT:	80-200 kDa
SPECIES REACTIVITY:	Human
PURIFICATION:	Protein A/G purified
FORM:	Liquid
FORMULATION:	Supplied in 10 mM PBS with 0.05% BSA & 0.05% azide
STORAGE CONDITIONS:	Shipped at 4°C. For long term storage store at -20°C in small aliquots to prevent freeze-thaw cycles
DESCRIPTION:	<p>This antibody recognizes proteins of 80-200 kDa, identified as different members of CEA family. CEA is synthesized during development in the fetal gut and is re-expressed in increased amounts in intestinal carcinomas and several other tumors. This MAb does not react with nonspecific cross-reacting antigen (NCA) and with human polymorphonuclear leucocytes. It shows no reaction with a variety of normal tissues and is suitable for staining of formalin/paraffin tissues. CEA is not found in benign glands, stroma, or malignant prostatic cells. Antibody to CEA is useful in detecting early foci of gastric carcinoma and in distinguishing pulmonary adenocarcinomas (60-70% are CEA+) from pleural mesotheliomas (rarely or weakly CEA+). Anti-CEA positivity is seen in adenocarcinomas from the lung, colon, stomach, esophagus, pancreas, gallbladder, urachus, salivary gland, ovary, and endocervix.</p>
APPLICATION:	<p>FC: 0.5-1 µg/1X10⁶ cells IF: 0.5-1 µg/ml IHC: 0.5-1 µg/ml for 30 minutes at RT (Staining of formalin-fixed tissues requires boiling tissue sections in 10mM citrate buffer, pH 6.0, for 10-20 min followed by cooling at RT for 20 minutes)</p>

Note: This information is only intended as a guide. The optimal dilutions must be determined by the user.



Formalin-fixed, paraffin-embedded human Colon Carcinoma stained with CEA, pan Monoclonal Antibody (C66/195+C66/261+ C66/1009+ C66/1030)

RELATED PRODUCTS:

- Anti-CEA Antibody (3C5C10) (Cat. No. A1357)
- Anti-CEA Antibody (1A5C3) (Cat. No. A1356)
- Carcinoembryonic Antigen (CEA) (human) ELISA Kit (Cat. No. K4805)
- Anti-Carcinoembryonic antigen (Arcitumomab), Human IgG1 Antibody (Cat. No. A1096)
- Anti-Carcinoembryonic Antigen Antibody (C66/1260) (Cat. No. A1464)

FOR RESEARCH USE ONLY! Not to be used on humans.