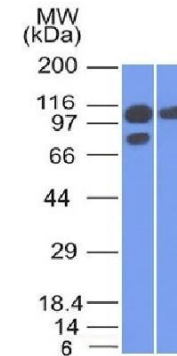


Anti-Catenin, alpha-1 Antibody (1G5)

CATALOG NO:	A1466-100
ALTERNATIVE NAMES:	Alpha E-catenin; Cadherin-associated protein; CAP102; Catenin alpha-1; CTNNA1; Renal carcinoma antigen NY-REN-13
AMOUNT:	100 µg
IMMUNOGEN:	Human alpha catenin fusion protein
HOST/ISOTYPE:	Mouse IgG1
CLONALITY:	Monoclonal
CLONE:	1G5
MOL WEIGHT:	102 kDa
SPECIES REACTIVITY:	Human
PURIFICATION:	Protein A/G purified
FORM:	Liquid
FORMULATION:	Supplied in 10 mM PBS with 0.05% BSA & 0.05% azide
STORAGE CONDITIONS:	Shipped at 4°C. For long term storage store at -20°C in small aliquots to prevent freeze-thaw cycles
DESCRIPTION:	Recognizes a protein of 102 kDa, identified as Catenin, alpha-1. Catenins comprise a large family of Ca ²⁺ -dependent, homotypic cell-cell adhesion molecules that play important roles in development, epithelial cell polarity and tumor progression. Alpha-catenin is a key regulator of actin dynamics in cell-cell adhesion. During cell-cell adhesion, α-catenin forms a heterodimer with β-catenin and links the cadherins to actin associated with the cytoskeleton. Alpha-catenin also regulates the beta-catenin signaling in various cells. It displays the tumor suppressor activity and is found to be down regulated in some forms of breast cancer.
APPLICATION:	FC: 0.5-1 µg/1X10 ⁶ cells IF: 1-2 µg/ml WB: 0.5-1 µg/ml

Note: This information is only intended as a guide. The optimal dilutions must be determined by the user.



Western Blot of A431 and MCF-7 Cell Lysates using Catenin, alpha-1 Mouse Monoclonal Antibody (1G5)

RELATED PRODUCTS:

- Phospho-b-Catenin Antibody (Cat. No. 3381)
- Anti-Adipophilin Antibody (ADFP/1494) (Cat. No. A1422)
- Anti-AFP Antibody (C3) (Cat. No. A1423)
- Anti-ALDH1A1 Antibody (ALDH1A1/1381) (Cat. No. A1424)
- Anti-ALK Antibody (ALK/1503) (Cat. No. A1425)
- Anti-Alkaline Phosphatase Antibody (ALPL/597) (Cat. No. A1426)
- Anti-Alpha-1-Antitrypsin Antibody (AAT/1378) (Cat. No. A1427)

FOR RESEARCH USE ONLY! Not to be used on humans.