

Anti-Catenin, beta Antibody (CTNNB1/1507)

CATALOG NO:	A1467-100
ALTERNATIVE NAMES:	Cadherin associated protein, beta 1 88kDa, Catenin beta-1, CATNB, CHBCAT, CTNNB1
AMOUNT:	100 µg
IMMUNOGEN:	Recombinant human full-length beta-Catenin (p120) protein fragment
HOST/ISOTYPE:	Mouse IgG1, kappa
CLONALITY:	Monoclonal
CLONE:	CTNNB1/1507
MOL WEIGHT:	92 kDa
SPECIES REACTIVITY:	Human, Mouse and Rat
PURIFICATION:	Protein A/G purified
FORM:	Liquid
FORMULATION:	Supplied in 10 mM PBS with 0.05% BSA & 0.05% azide
STORAGE CONDITIONS:	Shipped at 4°C. For long term storage store at -20°C in small aliquots to prevent freeze-thaw cycles

DESCRIPTION: Beta-catenin associates with the cytoplasmic portion of E-cadherin, which is necessary for the function of E-cadherin as an adhesion molecule. In normal tissues, beta-catenin is localized to the membrane of epithelial cells, consistent with its role in the cell adhesion complex. In breast ductal neoplasia, beta-catenin is usually localized in cellular membranes. However, in lobular neoplasia, a marked redistribution of beta-catenin throughout the cytoplasm results in a diffuse cytoplasmic pattern. Immuno-staining of beta-catenin and E-cadherin is helps in the accurate identification of ductal and lobular neoplasms, including a distinction between low-grade ductal carcinoma in situ (DCIS) and lobular carcinoma. Additionally, some rectal and gastric adenocarcinomas demonstrate diffuse cytoplasmic beta-catenin staining and a lack of membranous staining, mimicking the staining pattern observed with lobular breast carcinomas.

APPLICATION: FC: 0.5-1 ug/1X10⁶ cells
 IF: 1-2 ug/ml
 WB: 0.5-1ug/ml
 IHC: 1-2 ug/ml for 30 minutes at RT
 (Staining of formalin-fixed tissues requires boiling tissue sections in 10mM citrate buffer, pH 9.0, for 10-20 min followed by cooling at RT for 20 minutes)

Note: This information is only intended as a guide. The optimal dilutions must be determined by the user.

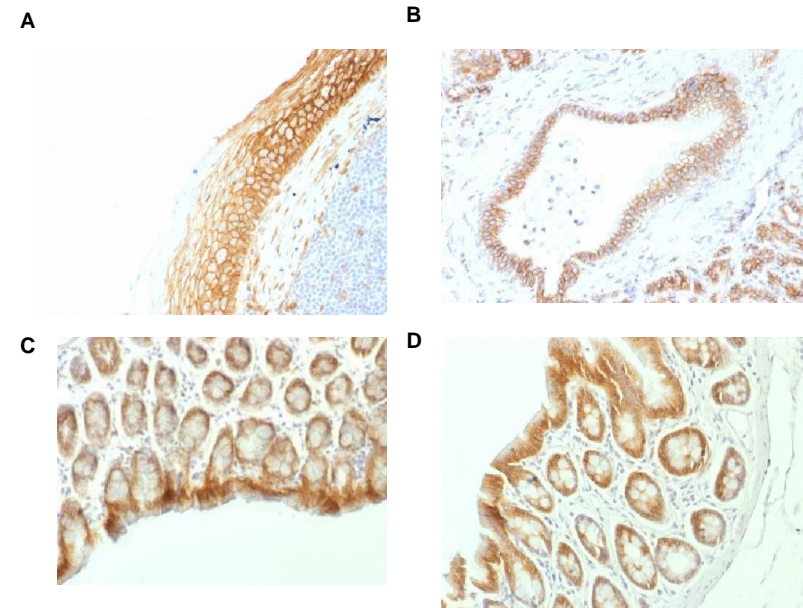


Fig. Formalin-fixed, paraffin-embedded (A) human Tonsil (B) human Pancreas (C) Mouse Colon (D) Rat Colon stained with Beta-Catenin (p120) Monoclonal Antibody (CTNNB1/1507)

RELATED PRODUCTS:

- Anti-AFP Antibody (C3) (Cat. No. A1423)
- Anti-ALDH1A1 Antibody (ALDH1A1/1381) (Cat. No. A1424)
- Anti-ALK Antibody (ALK/1503) (Cat. No. A1425)
- Anti-Alkaline Phosphatase Antibody (ALPL/597) (Cat. No. A1426)
- Anti-Alpha-1-Antitrypsin Antibody (AAT/1378) (Cat. No. A1427)

FOR RESEARCH USE ONLY! Not to be used on humans.

