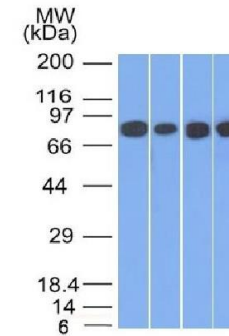


## Anti-Catenin, gamma Antibody (11 E4)

<b>CATALOG NO:</b>	A1468-100
<b>ALTERNATIVE NAMES:</b>	ARVD12; Catenin (cadherin-associated protein), gamma 80kDa; Catenin gamma; CTNNG; Desmoplakin III; Desmoplakin-3; DP3; DPIII; Junction Plakoglobin; PDGB; PKGB
<b>AMOUNT:</b>	100 µg
<b>IMMUNOGEN:</b>	Recombinant full length human plakoglobin, fused to maltose binding protein
<b>HOST/ISOTYPE:</b>	Mouse IgG1, kappa
<b>CLONALITY:</b>	Monoclonal
<b>CLONE:</b>	11 E4
<b>MOL WEIGHT:</b>	80-87 kDa
<b>SPECIES REACTIVITY:</b>	Human and Mouse
<b>PURIFICATION:</b>	Protein A/G purified
<b>FORM:</b>	Liquid
<b>FORMULATION:</b>	Supplied in 10 mM PBS with 0.05% BSA & 0.05% azide
<b>STORAGE CONDITIONS:</b>	Shipped at 4°C. For long term storage store at -20°C in small aliquots to prevent freeze-thaw cycles
<b>DESCRIPTION:</b>	It recognizes a protein of 80-87kDa, identified as gamma-catenin. The catenins (α, β, γ and δ) are ubiquitously expressed, cytoplasmic proteins that associate with E-cadherin at cellular junctions. Catenin/cadherin complexes play an important role in mediating cellular adhesion. α T-catenin, also referred to as VR22, is a 895-amino acid protein that is most abundantly expressed in cardio-myocytes and in the peritubular myoid cells of the testis. α T-catenin binds to α E-catenin as well as to β-catenin, and it functions to inhibit Wnt signaling. CTNNA3, the gene that encodes for α-T-catenin, is located on chromosome 10, and mutations in this gene show a strong correlation to late-onset Alzheimer s disease (LOAD) as well as to dilated cardiomyopathy.
<b>APPLICATION:</b>	FC: 0.5-1 ug/1X10 <sup>6</sup> cells IF: 1-2 ug/ml WB: 0.5-1ug/ml

**Note:** This information is only intended as a guide. The optimal dilutions must be determined by the user.



**Western Blot of HT20, A549, 293 and A431 Cell Lysates using Catenin, gamma Mouse Monoclonal Antibody (11E4)**

### RELATED PRODUCTS:

- Anti-Bcl-2 Antibody (100/D5 + 124) **(Cat. No. A1435)**
- Anti-Bcl-6 Antibody (BCL6/1475) **(Cat. No. A1436)**
- Anti-Bcl-6 Antibody (BCL6/1527) **(Cat. No. A1437)**
- Anti-Bax Antibody (BAX/962) **(Cat. No. A1434)**
- Anti-Adipophilin Antibody (ADFP/1494) **(Cat. No. A1422)**
- Anti-AFP Antibody (C3) **(Cat. No. A1423)**
- Anti-ALDH1A1 Antibody (ALDH1A1/1381) **(Cat. No. A1424)**
- Anti-ALK Antibody (ALK/1503) **(Cat. No. A1425)**
- Anti-Alkaline Phosphatase Antibody (ALPL/597) **(Cat. No. A1426)**
- Anti-Alpha-1-Antitrypsin Antibody (AAT/1378) **(Cat. No. A1427)**

**FOR RESEARCH USE ONLY! Not to be used on humans.**