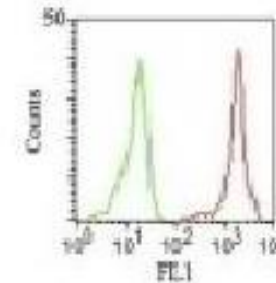


Anti-CD11a Antibody (CRIS-3)

CATALOG NO:	A1472-100
ALTERNATIVE NAMES:	Antigen CD11A (p180), lymphocyte function associated antigen 1, alpha polypeptide; Integrin alpha-L; ITGAL; Leukocyte Adhesion Glycoprotein LFA1 Alpha Chain; LFA 1 alpha (LFA1A); Ly15; Ly21; p180
AMOUNT:	100 µg
IMMUNOGEN:	Stimulated human leukocytes
HOST/ISOTYPE:	Mouse IgG2b, kappa
CLONALITY:	Monoclonal
CLONE:	CRIS-3
MOL WEIGHT:	180 kDa
SPECIES REACTIVITY:	Human
PURIFICATION:	Protein A/G purified
FORM:	Liquid
FORMULATION:	Supplied in 10 mM PBS with 0.05% BSA & 0.05% azide
STORAGE CONDITIONS:	Shipped at 4°C. For long term storage store at -20°C in small aliquots to prevent freeze-thaw cycles
DESCRIPTION:	Recognizes a protein of 180kDa, identified as CD11a (Leukocyte Workshop II; Code N202). CD11a complex with the 2 subunit of the integrin family, CD18, to form the cell surface heterodimer, LFA-1 or CD11a /C18 (aLbL). LFA-1 is expressed on all leukocytes including lymphocytes, monocytes, and granulocytes. It is involved in leukocyte adhesion to its ligands including intercellular adhesion molecule-1 (ICAM-1 or CD54), ICAM-2 (CD102), ICAM-3 (CD50) and Telencephalin (TLN) and play a role in most immune/inflammatory responses.
APPLICATION:	FC: 0.5-1 ug/1X10 ⁶ cells IF: 0.5-1 ug/ml

Note: This information is only intended as a guide. The optimal dilutions must be determined by the user.



FCM staining of human PBMC's using CD11a Monoclonal Antibody (CRIS-3)

RELATED PRODUCTS:

- Anti-CD11a (Efalizumab), Human IgG1 Antibody (**Cat. No. A1089**)
- Anti-human CD41 antibody (**Cat. No. A1503**)

FOR RESEARCH USE ONLY! Not to be used on humans.