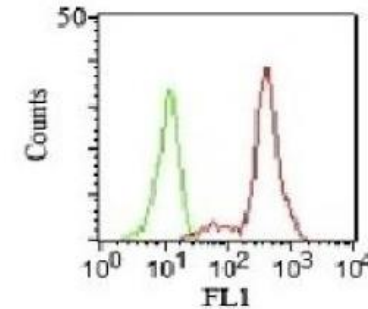


## Anti-CD11c Antibody (HC1/1)

<b>CATALOG NO:</b>	A1473-100
<b>ALTERNATIVE NAMES:</b>	CD11 antigen-like family member C; Complement component 3 receptor 4 subunit; Integrin alpha-X; integrin, alpha X (antigen CD11C (p150), alpha polypeptide); Leu M5 alpha subunit; Leukocyte adhesion glycoprotein p150 95 alpha chain; Myeloid membrane antigen alpha subunit; p150/95
<b>AMOUNT:</b>	100 µg
<b>IMMUNOGEN:</b>	Human monocytic U937 phorbol ester-treated cells
<b>HOST/ISOTYPE:</b>	Mouse IgG1, kappa
<b>CLONALITY:</b>	Monoclonal
<b>CLONE:</b>	HC1/1
<b>MOL WEIGHT:</b>	145 kDa
<b>SPECIES REACTIVITY:</b>	Human
<b>PURIFICATION:</b>	Protein A/G purified
<b>FORM:</b>	Liquid
<b>FORMULATION:</b>	Supplied in 10 mM PBS with 0.05% BSA & 0.05% azide
<b>STORAGE CONDITIONS:</b>	Shipped at 4°C. For long term storage store at -20°C in small aliquots to prevent freeze-thaw cycles
<b>DESCRIPTION:</b>	CD11c, also known as Integrin, alpha X (complement component 3 receptor 4 subunit) (ITGAX), is a type I transmembrane protein found at high levels on most human dendritic cells, but also on monocytes, macrophages, neutrophils, and some B cells that induces cellular activation and helps trigger neutrophil respiratory burst; expressed in hairy cell leukemias, acute non-lymphocytic leukemias, and some B-cell chronic lymphocytic leukemias.
<b>APPLICATION:</b>	FC: 0.5-1 µg/1X10 <sup>6</sup> cells IF: 0.5-1 µg/ml

**Note: This information is only intended as a guide. The optimal dilutions must be determined by the user.**



FCM staining of human PBMC's using CD11c Monoclonal Antibody (HC1/1)

### RELATED PRODUCTS:

- Anti-CD11a (Efalizumab), Human IgG1 Antibody (Cat. No. A1089)
- Anti-human CD41 antibody (Cat. No. A1503)

**FOR RESEARCH USE ONLY! Not to be used on humans.**