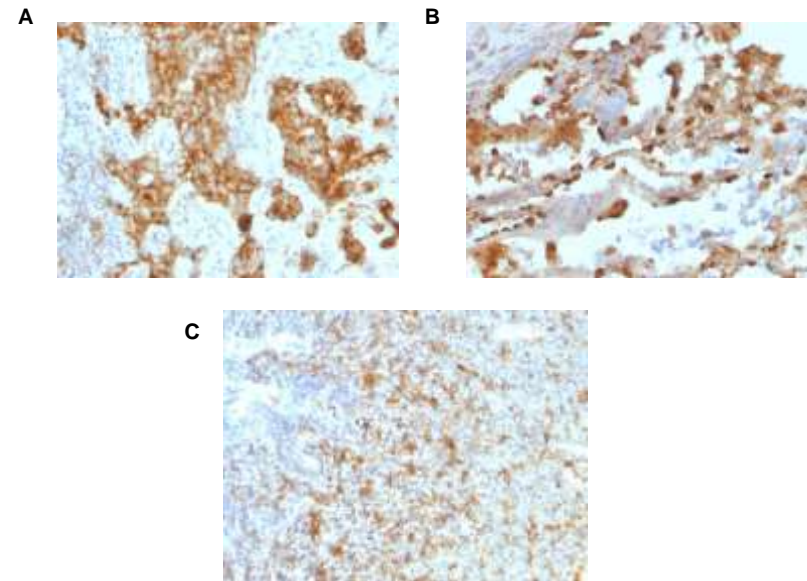


Anti-CD11c Antibody (ITGAX/1243)

CATALOG NO:	A1474-100
ALTERNATIVE NAMES:	CD11 antigen-like family member C; Complement component 3 receptor 4 subunit; Integrin alpha-X; integrin, alpha X (antigen CD11C (p150), alpha polypeptide); Leu M5 alpha subunit; Leukocyte adhesion glycoprotein p150 95 alpha chain; Myeloid membrane antigen alpha subunit; p150/95
AMOUNT:	100 µg
IMMUNOGEN:	Recombinant human ITGAX protein fragment (aa 637-827)
HOST/ISOTYPE:	Mouse IgG2b, kappa
CLONALITY:	Monoclonal
CLONE:	ITGAX/1243
MOL WEIGHT:	145 kDa
SPECIES REACTIVITY:	Human
PURIFICATION:	Protein A/G purified
FORM:	Liquid
FORMULATION:	Supplied in 10 mM PBS with 0.05% BSA & 0.05% azide
STORAGE CONDITIONS:	Shipped at 4°C. For long term storage store at -20°C in small aliquots to prevent freeze-thaw cycles
DESCRIPTION:	Recognizes a protein of 145kDa, identified as CD11c. CD11c (ITGAX), a member of the leukointegrin family, shares the same beta subunit with other members of the leukocyte adhesion molecule family, which includes CD11a (LFA-1), CD11b (MAC-1) and CD11d (ITGAD), but has a unique alpha chain. CD11c has been shown to play a role in phagocytosis, cell migration, and cytokine production by monocytes/macrophages as well as induction of T-cell proliferation by Langerhans cells. CD11c is expressed prominently on the plasma membranes of monocytes, tissue macrophages, NK cells, and most dendritic cells (DCs). A lower level of expression is also observed on neutrophils as a result of its high level of expression on most DCs. An antibody to CD11c may aid in identification of lesions with histiocytic origin. It may also been used as a marker for hairy cell leukemia in paraffin-embedded tissues.
APPLICATION:	FC: 0.5-1 µg/1X10 ⁶ cells IF: 0.5-1 µg/ml Immunohistology (Formalin-fixed) (1-2 µg/ml for 30 minutes at RT)(Staining of formalin-fixed tissues requires boiling tissue

sections in 10mM Tris with 1mM EDTA, pH 9.0, for 10-20 min followed by cooling at RT for 20 minutes)

Note: This information is only intended as a guide. The optimal dilutions must be determined by the user.



Formalin-fixed, paraffin-embedded (A) human Prostate Carcinoma (B) human Lung Carcinoma (C) human Follicular Lymphoma stained with CD11c Monoclonal Antibody (ITGAX/1243)

RELATED PRODUCTS:

- Anti-CD11a (Efalizumab), Human IgG1 Antibody (**Cat. No. A1089**)
- Anti-human CD41 antibody (**Cat. No. A1503**)
- Anti-CD11a Antibody (CRIS-3) (**Cat. No. A1472**)
- Anti-CD11c Antibody (HC1/1) (**Cat. No. A1473**)

FOR RESEARCH USE ONLY! Not to be used on humans.