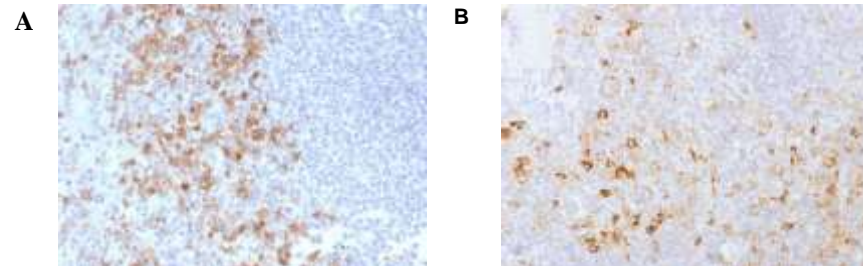


## Anti-CD162 Antibody (PSGL1/1601)

<b>CATALOG NO:</b>	A1477-100
<b>ALTERNATIVE NAMES:</b>	CD162; CLA; Cutaneous lymphocyte associated antigen; P-selectin glycoprotein ligand 1; PSGL1; Selectin P ligand; SELPLG
<b>AMOUNT:</b>	100 µg
<b>IMMUNOGEN:</b>	Recombinant human full-length SELPLG (CD162) protein
<b>HOST/ISOTYPE:</b>	Mouse / IgG1
<b>CLONALITY:</b>	Monoclonal
<b>CLONE:</b>	PSGL1/1601
<b>MOL WEIGHT:</b>	43-120 kDa
<b>SPECIES REACTIVITY:</b>	Human
<b>PURIFICATION:</b>	Protein A/G purified
<b>FORM:</b>	Liquid
<b>FORMULATION:</b>	Supplied in 10 mM PBS with 0.05% BSA & 0.05% azide
<b>STORAGE CONDITIONS:</b>	Shipped at 4°C. Long term storage at -20°C.
<b>DESCRIPTION:</b>	<p>CD162 glycoprotein functions as a high affinity counter-receptor for the cell adhesion molecules P-, E- and L- selectin expressed on myeloid cells and stimulated T lymphocytes. As such, this protein plays a critical role in leukocyte trafficking during inflammation by tethering of leukocytes to activated platelets or endothelia expressing selectins. This protein requires two post-translational modifications, tyrosine sulfation and the addition of the sialyl Lewis x tetrasaccharide (sLex) to its O-linked glycans, for its high-affinity binding activity. Aberrant expression of this gene and polymorphisms in this gene are associated with defects in the innate and adaptive immune response.</p>
<b>APPLICATION:</b>	<p>FC: 0.5-1ug/1X10<sup>6</sup> cells IF: 0.5-1ug/ml IHC: 1-2ug/ml for 30 minutes at RT (Staining of formalin-fixed tissues is enhanced by boiling tissue sections in 10mM Tris with 1mM EDTA, pH 9.0 for 10-20 min followed by cooling at RT for 20 minutes)</p>

**Note: This information is only intended as a guide. The optimal dilutions must be determined by the user.**



**Formalin-fixed, paraffin-embedded (A) human Spleen (B) human Tonsil stained with CD162 Monoclonal Antibody (PSGL1/1601).**

### RELATED PRODUCTS:

- Anti-CD160 Antibody (**Cat. No. A1072**)
- Anti-CD146 Rabbit Monoclonal Antibody (**Cat. No. A1122**)
- Human CellExp™ CSF1R/CD115, Mouse Recombinant (**Cat. No. P1080**)
- Human CellExp™ CD166/ ALCAM, human recombinant (**Cat. No. 7437**)
- Anti-CD11a Antibody (CRIS-3) (**Cat. No. A1472**)

**FOR RESEARCH USE ONLY! Not to be used on humans.**