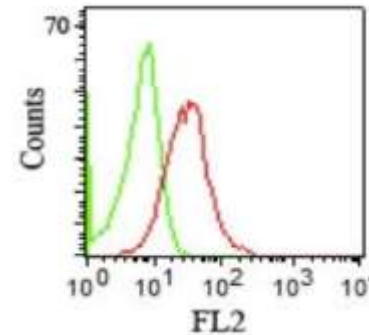


## Anti-CD1b Antibody (RIV12)

<b>CATALOG NO:</b>	A1479-100
<b>ALTERNATIVE NAMES:</b>	A1 domain; CD1B; Cortical thymocyte antigen CD1B; hTa1 thymocyte antigen; Ly38; T cell surface glycoprotein CD1b; T6/Leu6
<b>AMOUNT:</b>	100 µg
<b>IMMUNOGEN:</b>	Human peripheral lymphocytes
<b>HOST/ISOTYPE:</b>	Mouse / IgG1, kappa
<b>CLONALITY:</b>	Monoclonal
<b>CLONE:</b>	RIV12
<b>MOL WEIGHT:</b>	49 kDa
<b>SPECIES REACTIVITY:</b>	Human
<b>PURIFICATION:</b>	Protein A/G purified
<b>FORM:</b>	Liquid
<b>FORMULATION:</b>	Supplied in 10 mM PBS with 0.05% BSA & 0.05% azide
<b>STORAGE CONDITIONS:</b>	Shipped at 4°C. Long term storage at -20°C.
<b>DESCRIPTION:</b>	The mouse monoclonal antibody recognizes CD1b, a 44kDa type I glycoprotein associated with beta2-microglobulin. It is expressed on dendritic cells, Langerhans cells, thymocytes, and T acute lymphoblastic leukemia cells. The CD1 multigene family encodes five forms of the CD1 T-cell surface glycoprotein in human, designated CD1A, 1B, 1C, 1D and 1E. CD1, a type 1 membrane protein, has structural similarity to the MHC class I antigen and has been shown to present lipid antigens for recognition by T lymphocytes. Constitutive endocytosis of CD1B molecules and the differential sorting of MHC class II from lysosomes separate peptide- and lipid antigen-presenting molecules during dendritic cell maturation. CD1B is also expressed in interdigitating cells.
<b>APPLICATION:</b>	FC: 0.5-1ug/1X10 <sup>6</sup> cells in 0.1ml IF: 0.5-1ug/ml

**Note:** This information is only intended as a guide. The optimal dilutions must be determined by the user.



Flow Cytometry staining of human PBMC's using CD1b Monoclonal Antibody (RIV12).

### RELATED PRODUCTS:

- Anti-CD11c Antibody (HC1/1) (Cat. No. A1473)
- Anti-CD1a / HTA1 Antibody (C1A/711) (Cat. No. A1478)
- Anti-CD11a (Efalizumab), Human IgG1 Antibody (Cat. No. A1089)
- Anti-human CD41 antibody (Cat. No. A1503)

**FOR RESEARCH USE ONLY! Not to be used on humans.**