

Anti-CD20 / MS4A1 Antibody (SPM618)

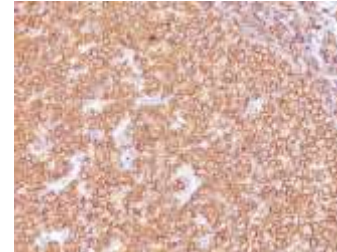
CATALOG NO:	A1480-100
ALTERNATIVE NAMES:	APY; ATOPY; B-lymphocyte antigen CD20; B-lymphocyte cell-surface antigen B1; Bp35; Fc epsilon receptor I beta chain; Fc Fragment of IgE high affinity I receptor for beta polypeptide; FCER1B; High affinity immunoglobulin epsilon receptor subunit beta; IgE Fc receptor subunit beta; IGEL; IGER; IGER; LEU16; Leukocyte surface antigen Leu-16; Ly44; Membrane spanning 4 domains subfamily A member 2; Membrane-spanning 4-domains subfamily A member 1 (MS4A1)
AMOUNT:	100 µg
IMMUNOGEN:	Recombinant human MS4A1 protein
HOST/ISOTYPE:	Mouse / IgG2a, kappa
CLONALITY:	Monoclonal
CLONE:	SPM618
MOL WEIGHT:	33-37 kDa
SPECIES REACTIVITY:	Human
PURIFICATION:	Protein A/G purified
FORM:	Liquid
FORMULATION:	Supplied in 10 mM PBS with 0.05% BSA & 0.05% azide
STORAGE CONDITIONS:	Shipped at 4°C. Long term storage at -20°C.

DESCRIPTION: Recognizes a protein of 30-33kDa, which is identified as CD20. It is a non-Ig differentiation antigen of B-cells and its expression is restricted to normal and neoplastic B-cells, being absent from all other leukocytes and tissues. CD20 is expressed by pre B-cells and persists during all stages of B-cell maturation but is lost upon terminal differentiation into plasma cells. This mAb can be used for immunophenotyping of leukemia and malignant cells, B lymphocyte detection in peripheral blood and B cell localization in tissues. It reacts with the majority of B-cells present in peripheral blood and lymphoid tissues and their derived lymphomas. In lymphoid tissue, germinal center blasts and B-immunoblasts are particularly reactive. It is a reliable antibody for ascribing a B-cell phenotype in known lymphoid tissues. Rarely, CD20-positive T-cell lymphomas have been reported. Reactivity has also been noted with Reed-Sternberg cells in cases of Hodgkin's disease, particularly of lymphocyte predominant type.

APPLICATION: FC: 0.5-1µg/1X10⁶ cells in 0.1ml
IF: 0.5-1µg/ml

IHC: 0.5-1 µg/ml for 30 minutes at RT
(Staining of formalin-fixed tissues requires boiling tissue sections in 10mM citrate buffer, pH 6.0, for 10-20 min followed by cooling at RT for 20 minutes)

Note: This information is only intended as a guide. The optimal dilutions must be determined by the user.



Formalin-fixed, paraffin-embedded human Tonsil stained with CD20 Monoclonal Antibody (SPM618)

RELATED PRODUCTS:

- Anti-CD20 Antibody (**Cat. No. A1385**)
- Anti-CD11c Antibody (ITGAX/1243) (**Cat. No. A1474**)
- Anti-CD47 Antibody (**Cat. No. A1387**)
- Anti-CD106 / VCAM1 Antibody (1.4C3) (**Cat. No. A1470**)
- Anti-CD146 Rabbit Monoclonal Antibody (**Cat. No. A1122**)
- Anti-CD164 Antibody (**Cat. No. A1242**)
- Anti-CD223 (LAG3) Antibody (**Cat. No. A1067**)
- Anti-CD160 Antibody (**Cat. No. A1072**)
- Anti-CD146 Rabbit Monoclonal Antibody (**Cat. No. A1122**)

FOR RESEARCH USE ONLY! Not to be used on humans.