

## Anti-CD209 / DC-SIGN Antibody (C209/1781)

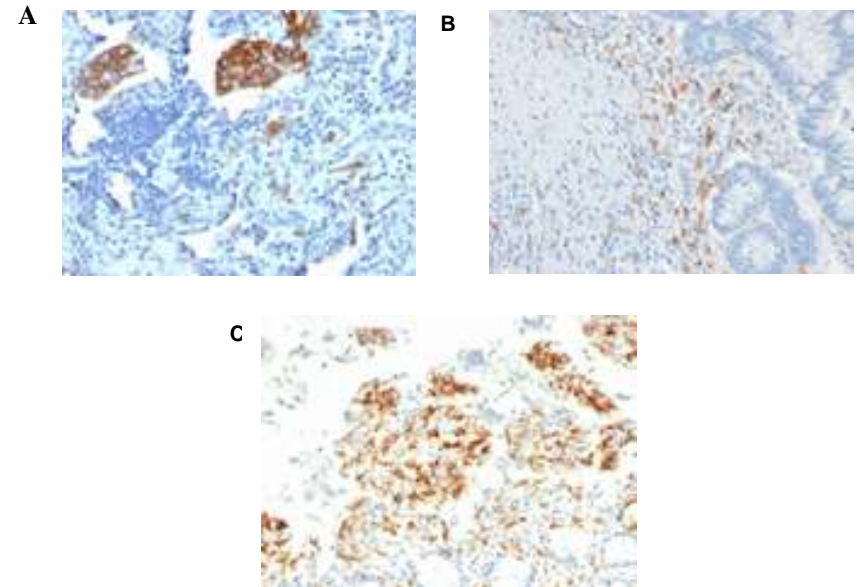
<b>CATALOG NO:</b>	A1481-100
<b>ALTERNATIVE NAMES:</b>	CD209; CDSIGN; CIRE; CLEC4L; DC-SIGN; DC-SIGN1; DCSIGN; Dendritic cell-specific ICAM-3 Grabbing Non-integrin 1; HIV GP120 Binding Protein; SIGN-R1; SIGNR5
<b>AMOUNT:</b>	100 µg
<b>IMMUNOGEN:</b>	Recombinant human CD209 protein fragment
<b>HOST/ISOTYPE:</b>	Mouse / IgG2b, kappa
<b>CLONALITY:</b>	Monoclonal
<b>CLONE:</b>	C209/1781
<b>MOL WEIGHT:</b>	45 kDa
<b>SPECIES REACTIVITY:</b>	Human
<b>PURIFICATION:</b>	Protein A/G purified
<b>FORM:</b>	Liquid
<b>FORMULATION:</b>	Supplied in 10 mM PBS with 0.05% BSA & 0.05% azide
<b>STORAGE CONDITIONS:</b>	Shipped at 4°C. Long term storage at -20°C.

**DESCRIPTION:** DC-SIGN is a transmembrane receptor that is expressed on the surface of dendritic cells and macrophages. It is involved in the innate immune system and recognizes numerous evolutionarily divergent pathogens ranging from parasites to viruses. The protein is organized into three distinct domains: an N-terminal transmembrane domain, a tandem-repeat neck domain and C-type lectin carbohydrate recognition domain. The extracellular region consisting of the C-type lectin and neck domains has a dual function as a pathogen recognition receptor and a cell adhesion receptor by binding carbohydrate ligands on the surface of microbes and endogenous cells. The neck region is important for homo-oligomerization, which allows the receptor to bind multivalent ligands with high avidity.

**APPLICATION:**

FC: 0.5-1µg/1X10<sup>6</sup> cells  
 IF: 1-2µg/ml  
 IHC: 0.5-1 µg/ml for 30 minutes at RT  
 (Staining of formalin-fixed tissues is enhanced by boiling tissue sections in 10mM Tris with 1mM EDTA Buffer, pH 9.0, for 10-20 min followed by cooling at RT for 20 minutes)

**Note:** This information is only intended as a guide. The optimal dilutions must be determined by the user.



Formalin-fixed, paraffin-embedded (A) human Lung Carcinoma (B) human Colon Carcinoma (C) human Small Intestine stained with CD209 Monoclonal Antibody (C209/1781).

**RELATED PRODUCTS:**

- Anti-CD106 / VCAM1 Antibody (1.4C3) (Cat. No. A1470)
- Anti-CD20 (Rituximab), Chimeric Antibody (Cat. No. A1049)
- Human CellExp™ CD200/OX-2, human recombinant (Cat. No. 7384)

**FOR RESEARCH USE ONLY! Not to be used on humans.**