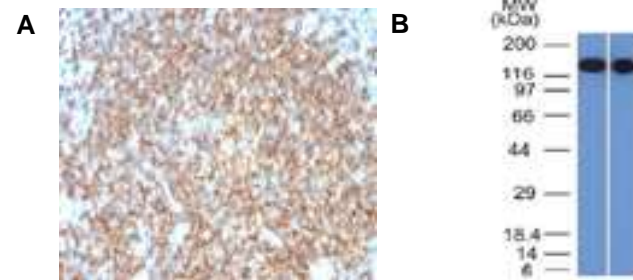


## Anti-CD22 / BL-CAM Antibody (BLCAM/1795)

<b>CATALOG NO:</b>	A1482-100
<b>ALTERNATIVE NAMES:</b>	B-lymphocyte cell adhesion molecule (BL-CAM); B-cell receptor CD22; CD22; Lectin 2; Lyb8; Sialic acid-binding Ig-like lectin 2 (Siglec-2); SIGLEC2; T-cell surface antigen Leu-14
<b>AMOUNT:</b>	100 µg
<b>IMMUNOGEN:</b>	Recombinant human BL-CAM/CD22 protein (aa52-178) (exact sequence is proprietary)
<b>HOST/ISOTYPE:</b>	Mouse / IgG1, kappa
<b>CLONALITY:</b>	Monoclonal
<b>CLONE:</b>	BLCAM/1795
<b>MOL WEIGHT:</b>	130-140 kDa
<b>SPECIES REACTIVITY:</b>	Human
<b>PURIFICATION:</b>	Protein A/G purified
<b>FORM:</b>	Liquid
<b>FORMULATION:</b>	Supplied in 10 mM PBS with 0.05% BSA & 0.05% azide
<b>STORAGE CONDITIONS:</b>	Shipped at 4°C. Long term storage at -20°C.
<b>DESCRIPTION:</b>	Recognizes a protein of 130-140kDa, identified as CD22 (also known as BL-CAM). CD22 expression is restricted to normal and neoplastic B cells and is absent from other haemopoietic cell types. In B-cell ontogeny, CD22 is first expressed in the cytoplasm of pro-B and pre-B cells, and on the surface as B cells mature to become IgD+. It is not expressed by plasma cells, CD22 is found highly expressed in follicular mantle and marginal zone B-cells, and while germinal center B-cells are relatively weak. CD22 is a member of the immunoglobulin superfamily and serves as an adhesion receptor for sialic acid-bearing ligands expressed on erythrocytes and all leukocyte classes. It also associates with tyrosine kinases and play a role in signal transduction and B-cell activation.
<b>APPLICATION:</b>	ELISA: Use Ab at 2-4ug/ml for coating FC: 0.5-1ug/1X10 <sup>5</sup> cells IF: 0.5-1ug/ml IHC: 1-2ug/ml for 30 minutes at RT WB: 0.5-1ug/ml (Staining of formalin-fixed tissues requires boiling tissue sections in 10mM Tris buffer with 1mM EDTA, pH 9.0, for 10-20 min followed by cooling at RT for 20 minutes)

**Note:** This information is only intended as a guide. The optimal dilutions must be determined by the user.



**Fig. A.** Formalin-fixed, paraffin-embedded human Tonsil stained with CD22 Monoclonal Antibody (BLCAM/1795).

**Fig. B.** Western Blot Analysis of Raji and Ramos Cell Lysates using CD22 Monoclonal Antibody (BLCAM/1795).

### RELATED PRODUCTS:

- BLCAM Antibody (**Cat. No. 3363**)
- BLCAM Blocking Peptide (**Cat. No. 3363BP**)
- Human CellExp™ Siglec-2 / CD22 isoform beta, Human Recombinant (**Cat. No. P117**)
- Anti-CD22 (Epratuzumab), Human IgG1 Antibody (**Cat. No. A1445**)
- sCD22, Human Recombinant (**Cat. No. 7123**)
- Anti-CD44 Antibody (Hermes-3) (**Cat. No. A1078**)
- HCAM Antibody (**Cat. No. 3393**)

**FOR RESEARCH USE ONLY! Not to be used on humans.**