

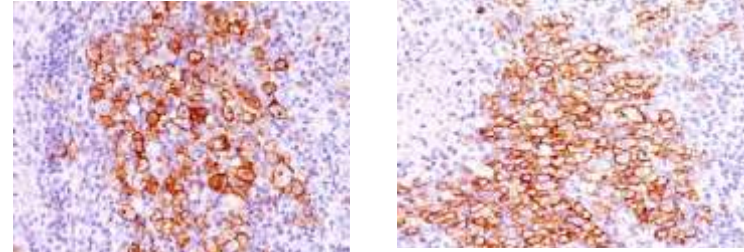
## Anti-CD30 / TNFRSF8 Antibody (CD30/412)

<b>CATALOG NO:</b>	A1484-100
<b>ALTERNATIVE NAMES:</b>	CD30L receptor, Cytokine receptor CD30, Ki-1 antigen, Lymphocyte activation antigen CD30, Tumor necrosis factor receptor superfamily member 8 (TNFRSF8)
<b>AMOUNT:</b>	100 µg
<b>IMMUNOGEN:</b>	Human CD30 recombinant protein
<b>HOST/ISOTYPE:</b>	Mouse / IgG1, kappa
<b>CLONALITY:</b>	Monoclonal
<b>CLONE:</b>	CD30/412
<b>MOL WEIGHT:</b>	105-120 kDa
<b>SPECIES REACTIVITY:</b>	Human
<b>PURIFICATION:</b>	Protein A/G purified
<b>FORM:</b>	Liquid
<b>FORMULATION:</b>	Supplied in 10 mM PBS with 0.05% BSA & 0.05% azide
<b>STORAGE CONDITIONS:</b>	Shipped at 4°C. Long term storage at -20°C.

**DESCRIPTION:** Recognizes a single chain glycoprotein of 105/120kDa, identified as CD30/Ki-1. CD30 is synthesized as a 90kDa precursor, which is processed in the Golgi complex into a membrane-bound phosphorylated mature 105/120 kDa glycoprotein. In Hodgkin's disease, CD30/Ki-1 antigen is expressed by mononuclear-Hodgkin and multinucleated Reed-Sternberg cells. It is also expressed by the tumor cells of a majority of anaplastic large cell lymphomas as well as by a varying proportion of activated T and B cells. This mAb distinguishes large cell lymphomas derived from activated lymphoid cells from histiocytic malignancies and lymphomas derived from resting and precursor lymphoid cells or from anaplastic carcinomas. About one third of the Ki-1 positive lymphomas lack the leukocyte common antigen (CD45).

**APPLICATION:** FC: 0.5-1µg/1X10<sup>6</sup> cells in 0.1ml  
 IF: 1-2µg/ml  
 IHC: 0.5-1 µg/ml for 30 minutes at RT  
 (Staining of formalin-fixed tissues requires boiling tissue sections in 10mM Tris with 1mM EDTA, pH 9.0, for 10-20 min followed by cooling at RT for 20 minutes)

**Note: This information is only intended as a guide. The optimal dilutions must be determined by the user.**



**Formalin-fixed, paraffin-embedded human Hodgkin's lymphoma stained with CD30 Ab (CD30/412).**

### RELATED PRODUCTS:

- Human CellExp™ CD30 /TNFRSF8, human recombinant (**Cat. No. 7389**)
- TNFRSF8/CD30 (Human) ELISA Kit (**Cat. No. K4182**)
- TNFSF8 (Human) ELISA Kit (**Cat. No. K4248**)
- TNFSF8, human recombinant (**Cat. No. 7331**)
- Human CellExp™ CD27 / TNFRSF7, Human recombinant (**Cat. No. 9243**)

**FOR RESEARCH USE ONLY! Not to be used on humans.**