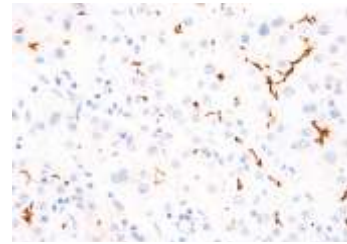


Anti-BSEP Antibody (IHC518)

CATALOG NO:	A1491-50
ALTERNATIVE NAMES:	ATP-binding cassette sub-family B member 11, Bile salt export pump, BSEP
AMOUNT:	50 µl
IMMUNOGEN:	BSEP
HOST/ISOTYPE:	IgG1
CLONALITY:	Monoclonal
CLONE:	IHC518
MOL WEIGHT:	146 kDa
SPECIES REACTIVITY:	Human
PURIFICATION:	Protein A/G purification
FORM:	Liquid
FORMULATION:	Tris Buffer, pH 7.3 - 7.7, with 1% BSA and <0.1% Sodium Azide
STORAGE CONDITIONS:	Shipped at 4°C. For long term storage store at 4°C. Do not freeze.
DESCRIPTION:	Bile Salt Export Pump (BSEP) is a member of the ATP-binding cassette (ABC) transporters, which mediates the transport of bile acid, taurocholate and other cholate conjugates across the hepatocyte canalicular membrane into the canaliculus. BSEP is associated with progressive familial intrahepatic cholestasis type 2 (PFIC2) and benign recurrent intrahepatic cholestasis type 2 (BRIC2). PFIC2 caused by mutations in the BSEP gene increases the risk of hepatocellular carcinoma in early life.
APPLICATION:	IHC: 1:100 - 1:200

Note: This information is only intended as a guide. The optimal dilutions must be determined by the user.



Formalin-fixed, paraffin-embedded liver tissue stained with BSEP Antibody (IHC518)

RELATED PRODUCTS:

- BCRP (ABCG2) Antibody (Cat. No. 6971)
- Anti-ABCF1 Antibody (Cat. No. A1236)
- ABCG2 (Human) ELISA Kit (Cat. No. K4188)
- ABCG1 Antibody (NT) (Cat. No. 6704)
- ABCG1 Antibody (Center) (Cat. No. 6705)

FOR RESEARCH USE ONLY! Not to be used on humans.