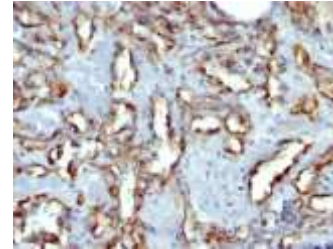


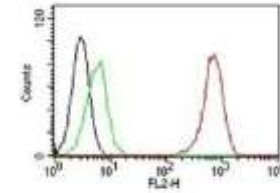
Anti-CD31 / PECAM-1 Antibody (C31.7)

CATALOG NO:	A1496-100
ALTERNATIVE NAMES:	EndoCAM; PECA1; Platelet Endothelial Cell Adhesion Molecule 1; GPIIA'
AMOUNT:	100 µg
IMMUNOGEN:	Human recombinant CD31 protein
HOST/ISOTYPE:	Mouse / IgG1, kappa
CLONALITY:	Monoclonal
CLONE:	C31.7
MOL WEIGHT:	~100 kDa (endothelium) and ~130 kDa (platelets)
SPECIES REACTIVITY:	Human, Cynomolgus Monkey and Rabbit. Weakly reacts with Rat.
PURIFICATION:	Protein A/G purified
FORM:	Liquid
FORMULATION:	Supplied in 10 mM PBS with 0.05% BSA & 0.05% azide
STORAGE CONDITIONS:	Shipped at 4°C. Long term storage at -20°C.
DESCRIPTION:	CD31 (PECAM-1) is a transmembrane glycoprotein member of the immunoglobulin supergene family of adhesion molecules. CD31 is expressed by stem cells of the hematopoietic system and is primarily used to identify and concentrate these cells for experimental studies as well as for bone marrow transplantation. Anti-CD31 has shown to be highly specific and sensitive for vascular endothelial cells. Staining of nonvascular tumors (excluding hematopoietic neoplasms) is rare. CD31 mAb reacts with normal, benign, and malignant endothelial cells which make up blood vessel lining. The level of CD31 expression can help to determine the degree of tumor angiogenesis, and a high level of CD31 expression may imply a rapidly growing tumor and potentially a predictor of tumor recurrence
APPLICATION:	FC: 0.5-1ug/1X10 ⁶ cells in 0.1ml IF: 0.5-1ug/ml WB: 0.5-1.0ug/ml IHC: 1-2 ug/ml for 30 minutes at RT (Staining of formalin-fixed tissues requires boiling tissue sections in 10mM Tris with 1mM EDTA, pH 9.0, for 10-20 min followed by cooling at RT for 20 minutes)

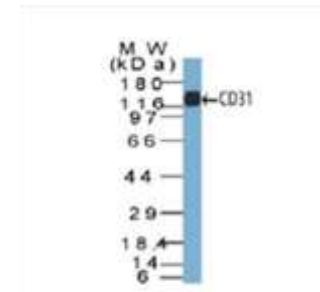
Note: This information is only intended as a guide. The optimal dilutions must be determined by the user.



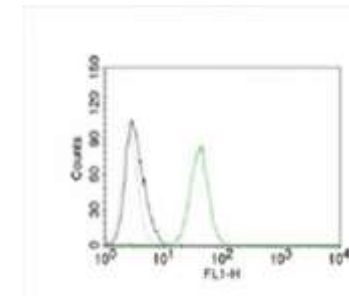
Formalin-fixed, paraffin-embedded human Angiosarcoma stained with CD31 Monoclonal Antibody (C31.7).



Flow Cytometry of human CD31 on Jurkat Cells. Black: Cells alone; Green: Isotype Control; Red: PE-labeled CD31 Monoclonal Antibody (C31.7).



Western Blot of CD31 in THP-1 Lysate using CD31 Monoclonal Antibody (C31.7)



Flow Cytometry of human CD31 on Jurkat Cells. Black: Cells alone; Grey: Isotype Control; Green: AF488-labeled CD31 Monoclonal Antibody (C31.7).

RELATED PRODUCTS:

- Anti- CD31 (PECAM-1) Rabbit Monoclonal Antibody (**Cat. No. A1123**)
- Human CellExp™ PECAM-1, Human Recombinant (**Cat. No. 7184**)

FOR RESEARCH USE ONLY! Not to be used on humans.