

Anti-human CD9 Antibody

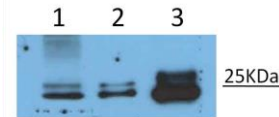
ALTERNATE NAMES:	CD9; DRAP-27 (Diphtheria Toxin Receptor-associated Protein)
CATALOG NO.:	A1500-50
AMOUNT:	50 µg
HOST:	Mouse
ISOTYPE:	Mouse IgG1
CLONALITY:	Mouse Monoclonal Unconjugated
IMMUNOGEN:	Pre-B cell line NALM-6
PURIFICATION:	>95%, purified from tissue culture supernatant or ascites by protein A affinity chromatography.
MOLECULAR WEIGHT:	24 kDa
FORM:	Liquid
FORMULATION:	1 mg/ml in phosphate buffered saline (PBS) with sodium azide (15 mM), Approx. pH: 7.4.
SPECIES REACTIVITY:	Human
STORAGE CONDITIONS:	Store undiluted at 4°C. DO NOT FREEZE! Do not use after expiration date stamped on vial label.
DESCRIPTION:	Anti-CD9 recognizes a human 24-kiloDalton (kDa) single-chain cell-surface glycoprotein (p24) belonging to the tetraspanin family which transverse the membrane four times. The CD9 antigen has a very broad tissue distribution. It is present on basophils, eosinophils, monocytes, pre-B cells, B cells, and various leukemic cell lines (erythroid, myeloid, some T-lymphoid, pre-B-lymphoid). It is also found on follicular center cells, sinus histocytes, macrophages, Kupffer cells, osteoclasts, hepatocytes, bile duct endothelium, renal glomeruli, proximal and distal tubuli, epithelia (intercellular spinous spaces) of skin and mucosa, fibroblasts, connective tissue, endothelium, smooth muscle, cardiac muscle, synovial lining cells, brain white matter, peripheral nerves and human keratin. In addition to being a co-stimulatory molecule, CD9 antigen activates platelets and

induces mitogenesis and kinase activity and is involved in cell migration, cell adhesion, and integrin signaling.

SPECIFICITY: WB (1:1000), ELISA (1:500), FACS (1:200)

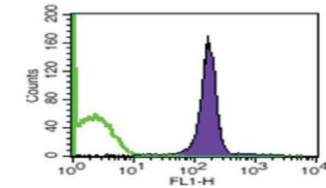
APPLICATIONS: Western Blot (WB) (using non-reducing conditions)
Enzyme-Linked Immunosorbent Assay (ELISA)
Fluorescent-Activated Cell Sorting (FACS)

Note: This information is only intended as a guide. The optimal dilutions must be determined by the user.

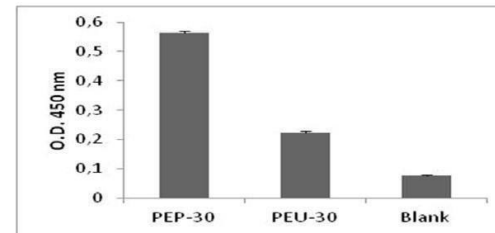


Detection of CD9 by Western Blot.

- 1- MM1 (melanoma cell) lysate (20 µg)
- 2- Purified exosomes from MM1 cells (20 µg)
- 3- Plasma healthy donors purified exosomes (20 µg)



Detection of CD9 by FACS. CD9 staining of human plasma purified exosomes.



Detection of CD9 by ELISA. CD9 detection in purified exosomes from human plasma (PEP) and urine (PEU), 30 µg.

RELATED PRODUCTS:

- CD9 Biotin conjugated antibody (Cat. No. 1501-50)
- Other exosome specific antibodies (Cat. No. 1500-50 to Cat. No. 1515-50)

FOR RESEARCH USE ONLY! Not to be used on humans.