

## Anti-human CD9 Biotin Conjugated Antibody

<b>ALTERNATE NAMES:</b>	CD9; DRAP-27 (Diphtheria Toxin Receptor-associated Protein)
<b>CATALOG NO.:</b>	A1501-50
<b>AMOUNT:</b>	50 µg
<b>HOST:</b>	Mouse
<b>ISOTYPE:</b>	Mouse IgG1
<b>CLONALITY:</b>	Mouse Monoclonal Biotin Conjugated
<b>IMMUNOGEN:</b>	Pre-B cell line NALM-6
<b>PURIFICATION:</b>	>95%, purified from tissue culture supernatant or ascites by protein A affinity chromatography.
<b>MOLECULAR WEIGHT:</b>	24 kDa
<b>FORM:</b>	Liquid
<b>FORMULATION:</b>	1 mg/ml in phosphate buffered saline (PBS) with sodium azide (15 mM), Approx. pH: 7.4.
<b>SPECIES REACTIVITY:</b>	Human
<b>STORAGE CONDITIONS:</b>	Store undiluted at 4°C. DO NOT FREEZE! Do not use after expiration date indicated on vial.

**DESCRIPTION:** Anti-CD9 recognizes a human 24-kiloDalton (kDa) single-chain cell-surface glycoprotein (p24) belonging to the tetraspanin family which transverse the membrane four times. The CD9 antigen has a very broad tissue distribution. It is present on basophils, eosinophils, monocytes, pre-B cells, B cells, and various leukemic cell lines (erythroid, myeloid, some T-lymphoid, pre-B-lymphoid). It is also found on follicular center cells, sinus histocytes, macrophages, Kupffer cells, osteoclasts, hepatocytes, bile duct endothelium, renal glomeruli, proximal and distal tubuli, epithelia (intercellular spinous spaces) of skin and mucosa, fibroblasts, connective tissue, endothelium, smooth muscle, cardiac muscle, synovial lining cells, brain white matter, peripheral nerves and human keratin. In addition to being a co-stimulatory molecule, CD9 antigen activates platelets and

induces mitogenesis and kinase activity and is involved in cell migration, cell adhesion, and integrin signaling.

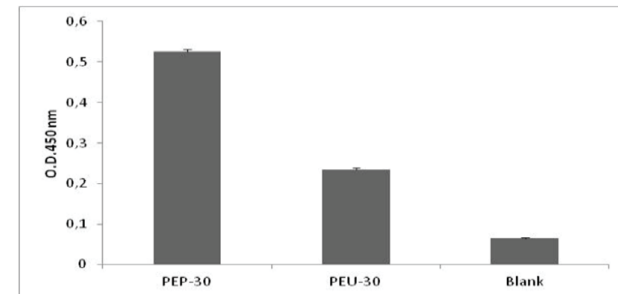
**SPECIFICITY:** WB (1:1000), ELISA (1:500), IHC, IP

**APPLICATIONS:** Western Blot (WB) (using non-reducing conditions)  
Enzyme-Linked Immunosorbent Assay (ELISA)  
Immunohistochemistry (IHC) (on frozen tissue including spleen/thymus) sections (2-10 µg/ml). However, we do not recommend using this antibody on the formalin fixed paraffin tissue sections  
Immunoprecipitation (IP)

**Note:** This information is only intended as a guide. The optimal dilutions must be determined by the user.



**Detection of CD9 by Western Blot.** 1- COLO1 cell lysates (20 µg); 2- Plasma purified exosomes (20 µg).



**Detection of CD9 by ELISA.** CD9 detection in purified exosomes from human plasma (PEP) and urine (PEU), 30 µg.

### RELATED PRODUCTS:

- CD9 Unconjugated antibody (Cat. No. 1500-50)
- Other exosome specific antibodies (Cat. No. 1500-50 to Cat. No. 1515-50)

**FOR RESEARCH USE ONLY! Not to be used on humans.**