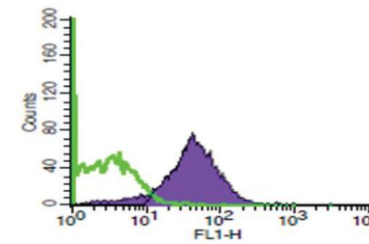


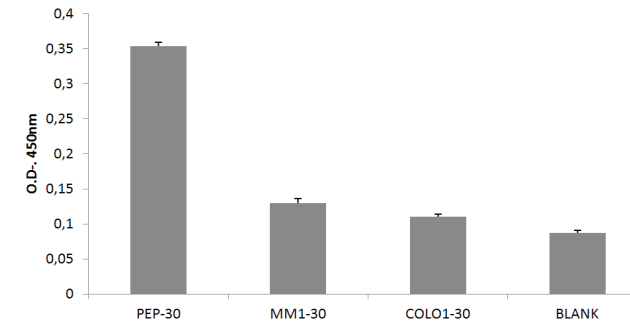
Anti-human CD41 Antibody

ALTERNATE NAMES:	CD41; Integrin alpha chain 2b (ITGA2B)
CATALOG NO.:	A1503-100
AMOUNT:	100 µg
HOST:	Mouse
ISOTYPE:	Mouse IgG1
CLONALITY:	Mouse Monoclonal unconjugated
IMMUNOGEN:	Leucocytes of a patient suffering from LGL Type Leukemia
PURIFICATION:	Protein A affinity chromatography
FORM:	Liquid
FORMULATION:	1 mg/ml in phosphate buffered saline (PBS) with sodium azide (15 mM), Approx. pH: 7.4.
SPECIES REACTIVITY:	Human
STORAGE CONDITIONS:	Store at 2-8°C. DO NOT FREEZE! Do not use after expiration date indicated on vial label.
DESCRIPTION:	Integrin alpha chain 2b, also known as CD41, is a heterodimeric integral membrane protein. It undergoes post-translational modifications that result in two polypeptide chains linked by a disulfide bond. CD41 is expressed on platelets and megakaryocytes, but also on early embryonic hematopoietic stem cells and related exosomes.
SPECIFICITY:	ELISA (1:500), FACS
APPLICATIONS:	Enzyme-Linked Immunosorbent Assay (ELISA) Fluorescent-Activated Cell Sorting (FACS)

rev 09/19



Detection of CD41 by FACS. CD41 staining of human plasma purified exosomes.



Detection of CD41 by ELISA. PEP-30: 30 µg of purified exosomes from human healthy donor's plasma. MM1-30: 30 µg of purified exosomes from MM1 cell supernatant. COLO1-30: 30 µg of purified exosomes from COLO1 cell supernatant.

RELATED PRODUCTS:

- Other exosome specific antibodies (Cat. No. 1500-50 to Cat. No. 1515-50)

FOR RESEARCH USE ONLY! Not to be used on humans.

Note: This information is only intended as a guide. The optimal dilutions must be determined by the user.