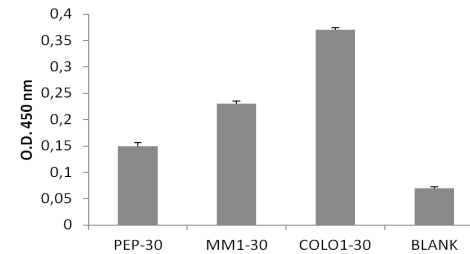
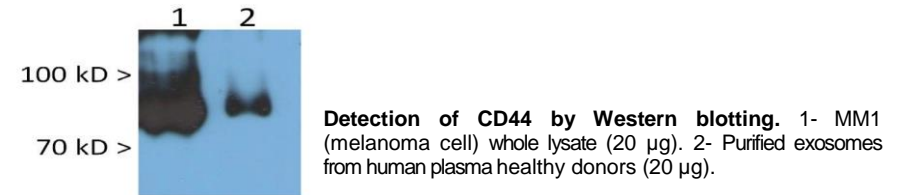


## Anti-human CD44 Antibody

<b>ALTERNATE NAMES:</b>	CD44; HCAM (homing cell adhesion molecule)
<b>CATALOG NO.:</b>	A1505-100
<b>AMOUNT:</b>	100 µg
<b>HOST:</b>	Mouse
<b>ISOTYPE:</b>	Mouse IgG2b
<b>CLONALITY:</b>	Mouse Monoclonal Unconjugated
<b>IMMUNOGEN:</b>	Leucocytes of a patient suffering from LGL Type Leukemia
<b>PURIFICATION:</b>	>95%, purified from tissue culture supernatant or ascites by protein A affinity chromatography.
<b>MOLECULAR WEIGHT:</b>	82 kDa
<b>FORM:</b>	Liquid
<b>FORMULATION:</b>	1 mg/ml in phosphate buffered saline (PBS) with sodium azide (15 mM), Approx. pH: 7.4.
<b>SPECIES REACTIVITY:</b>	Human
<b>STORAGE CONDITIONS:</b>	Store undiluted at 2-8°C. DO NOT FREEZE! Upon reconstitution aliquot. Store at -20°C long term. Avoid freeze / thaw cycle. Do not use after expiration date indicated on vial.
<b>DESCRIPTION:</b>	CD44, known also as HCAM, is a 742 amino acids protein involved in hematopoiesis, lymphocytes activation. CD44 is expressed in multiple isoforms. In particular, CD44 is highly expressed in cancer tissues and tumor-derived exosomes, suggesting a role in tumor progression and metastasis.
<b>SPECIFICITY:</b>	WB, ELISA, IP
<b>RECOMMENDED DILUTION:</b>	1 µg/ml
<b>APPLICATIONS:</b>	Western Blot (WB) Enzyme-Linked Immunosorbent Assay (ELISA) Immunoprecipitation (IP)

**Note:** This information is only intended as a guide. The optimal dilutions must be determined by the user.



**Detection of CD44 by ELISA.** PEP-30: 30 µg of purified exosomes from human healthy donor's plasma. MM1-30: 30 µg of purified exosomes from MM1 cell supernatant. COLO1-30: 30 µg of purified exosomes from COLO1 cell supernatant.

### RELATED PRODUCTS:

- Other exosome specific antibodies (Cat. No. 1500-50 to Cat. No. 1515-50)

**FOR RESEARCH USE ONLY! Not to be used on humans.**