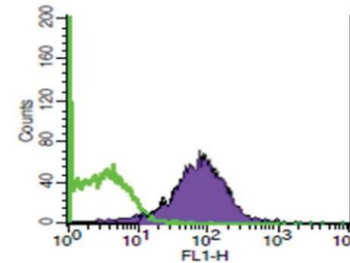
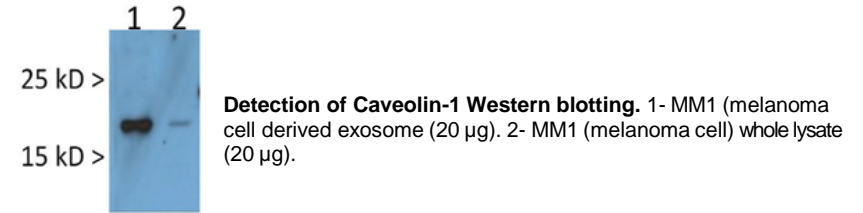


Anti-human Caveolin-1 Antibody

ALTERNATE NAMES:	Caveolin 1; CAV1
CATALOG NO.:	A1506-50
AMOUNT:	50 µg
HOST:	Mouse
ISOTYPE:	Mouse IgG2b
CLONALITY:	Mouse Monoclonal Unconjugated
IMMUNOGEN:	156-176 aa of Caveolin-1 protein
PURIFICATION:	>95%, purified from tissue culture supernatant or ascites by protein A affinity chromatography.
MOLECULAR WEIGHT:	22 kDa
FORM:	Liquid
FORMULATION:	0.5 mg/ml in Glycine (0.1 M), NaCl (0.5 M), Tris-HCl (0.1 M) with sodium azide (15mM), pH: 7.4.
SPECIES REACTIVITY:	Human
STORAGE CONDITIONS:	Store at 4°C for short term. Upon delivery aliquot and store at -20°C for long term storage. Avoid repeated freeze/thaw cycles. Do not use after expiration date stamped on vial label.
DESCRIPTION:	The lipid raft-associated protein Caveolin-1 (CAV1) is the major component of the inner surface of caveolae, small invaginations of the plasma membrane. Caveolin is a transmembrane adaptor molecule that can simultaneously recognize GPI-linked proteins and interact with downstream cytoplasmic signaling molecules. It is highly expressed on exosomes derived from tumor tissues.
SPECIFICITY:	WB (1:500), FACS
APPLICATIONS:	Western Blot (WB) Fluorescent-Activated Cell Sorting (FACS)

Note: This information is only intended as a guide. The optimal dilutions must be determined by the user.



Detection of CAV1 by FACS. Staining of Caveolin-1 in MM1 purified exosomes.

RELATED PRODUCTS:

- Other exosome specific antibodies (Cat. No. 1500-50 to Cat. No. 1515-50)

FOR RESEARCH USE ONLY! Not to be used on humans.