

Anti-human Alix Antibody

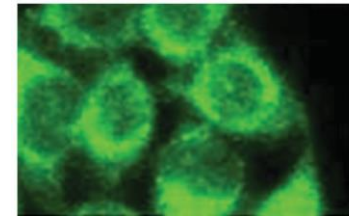
ALTERNATE NAMES:	Alix; ALG2 interacting protein; PDCD6-interacting protein
CATALOG NO.:	A1507-50
AMOUNT:	50 µg
HOST:	Mouse
ISOTYPE:	Mouse IgG1
CLONALITY:	Mouse Monoclonal Unconjugated
IMMUNOGEN:	Amino acids 463-732 of ALIX of human origin
PURIFICATION:	Protein A affinity chromatography
MOLECULAR WEIGHT:	95 kDa
FORM:	Liquid
FORMULATION:	0.2 mg/ml in phosphate buffered saline (PBS) with sodium azide (15 mM), Approx. pH 7.4.
SPECIES REACTIVITY:	Human
STORAGE CONDITIONS:	Store at 2-8°C. DO NOT FREEZE! Do not use after expiration date stamped on vial label.
DESCRIPTION:	Alix protein, named also ALG2 interacting protein or PDCD6-interacting protein, is a cytoplasmic protein that interacts with apoptosis associated-proteins. Alix plays an active role in exosome biogenesis and it is a useful internal marker for the analysis of exosomal proteins with western blotting.
SPECIFICITY:	WB (1:500), FACS, IF
APPLICATIONS:	Western Blot (WB) Fluorescent-Activated Cell Sorting (FACS) Immunofluorescence (IF)

Note: This information is only intended as a guide. The optimal dilutions must be determined by the user.



Detection of Alix by Western Blot.

- 1- MM1 (melanoma cell) lysate (20 µg)
- 2- MM1 cells purified exosomes (20 µg)
- 3- Plasma healthy donors purified exosomes (20 µg)



Detection of Alix by Immunofluorescence. Immunofluorescence staining of HeLa cells.

RELATED PRODUCTS:

- Other exosome specific antibodies (Cat. No. 1500-50 to Cat. No. 1515-50)

FOR RESEARCH USE ONLY! Not to be used on humans.