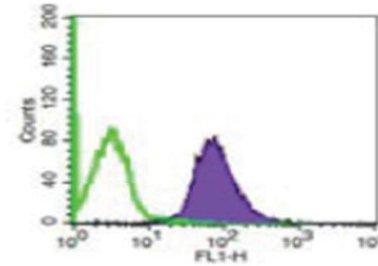


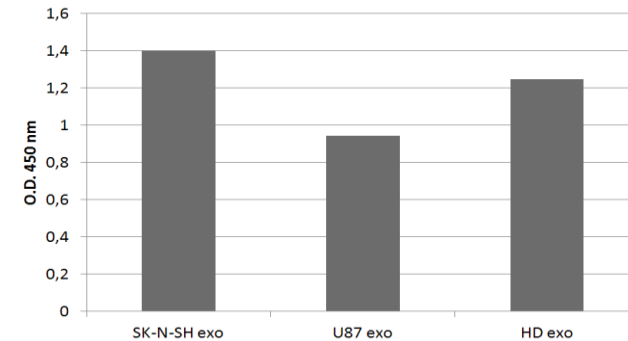
Anti-human Flotillin 1 Antibody

ALTERNATE NAMES:	Flotillin-1
CATALOG NO.:	A1510-50
AMOUNT:	50 µg
HOST:	Rabbit
ISOTYPE:	Rabbit Polyclonal
CLONALITY:	Rabbit Polyclonal Unconjugated
IMMUNOGEN:	Amino acid 324-427 of Flotillin-1 of human origin
PURIFICATION:	Protein A Affinity chromatography
MOLECULAR WEIGHT:	47 kDa
FORM:	Liquid
FORMULATION:	0.2 mg/ml in phosphate buffered saline (PBS) with sodium azide (15 mM), Approx. pH: 7.4.
SPECIES REACTIVITY:	Human
STORAGE CONDITIONS:	Store at 2-8°C. DO NOT FREEZE! Do not use after expiration date stamped on vial label.
DESCRIPTION:	Flotillin belongs to the band 7.2/stomatin protein family and appears to be strongly expressed in muscle cells and fibroblasts. Flotillin expression is also correlated with Alzheimer development. Flotillin is highly expressed on exosomes and appears to be involved in exosome release. It is considered a common marker for exosomes analyses.
SPECIFICITY:	WB, FACS, ELISA (1:500)
APPLICATIONS:	Western Blotting (WB) Fluorescent-Activated Cell Sorting (FACS) Enzyme-Linked Immunosorbent Assay (ELISA)

Note: This information is only intended as a guide. The optimal dilutions must be determined by the user.



Detection of Flotillin by FACS. Purified exosomes from MM1 (30 µg) stained by anti-Flotillin antibody.



Detection of Flotillin by ELISA. Detection of different exosomes purified from cell culture supernatants or human plasma (HD).

RELATED PRODUCTS:

- Other exosome specific antibodies (Cat. No. 1500-50 to Cat. No. 1515-50)

FOR RESEARCH USE ONLY! Not to be used on humans.

