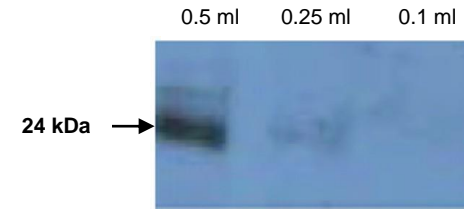


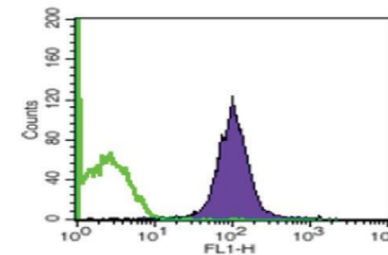
Anti-human Rab5 Antibody

ALTERNATE NAMES:	Rab5; Early Endosome Marker
CATALOG NO.:	A1511-50
AMOUNT:	50 µg
HOST:	Rabbit
ISOTYPE:	Rabbit Polyclonal
CLONALITY:	Rabbit polyclonal Unconjugated
IMMUNOGEN:	Full length of RAB5 protein
PURIFICATION:	Antigen Affinity Chromatography
MOLECULAR WEIGHT:	24 kDa
FORM:	Liquid
FORMULATION:	0.2 mg/ml in Glycine (0.1 M), NaCl (0.5 M), Tris-HCl (0.1 M) with sodium azide (15 mM), pH: 7.4.
SPECIES REACTIVITY:	Human
STORAGE CONDITIONS:	Store at 4°C for short term. Upon delivery aliquot and store at -20°C for long term storage. Avoid repeated freeze/thaw cycles. Do not use after expiration date stamped on vial label.
DESCRIPTION:	Rab5 is a small GTPase belonging to Ras superfamily of monomeric G proteins. Rab GTPases play an essential role in the regulation of membrane traffic and are involved in vesicle formation and transport and fusion to the membrane. Rab5 is expressed on exosome membranes and it might have an active role during endo/exocytotic processes of microvesicles through the plasma membrane.
SPECIFICITY:	WB (1:500), ELISA (1:500), FACS, IP
APPLICATIONS:	Western Blot (WB) Enzyme-Linked Immunosorbent Assay (ELISA) Fluorescent-Activated Cell Sorting (FACS) Immunoprecipitation (IP)

Note: This information is only intended as a guide. The optimal dilutions must be determined by the user.



Detection of Rab-5 by Western Blot. Exosomes purified from 0.5, 0.25, 0.1 ml of human plasma demonstrate different intensity of Rab5 expression.



Detection of Rab5 by FACS. Purified exosomes from COLO1 cell line detected by Rab5 antibody.

RELATED PRODUCTS:

- Other exosome specific antibodies (Cat. No. 1500-50 to Cat. No. 1515-50)

FOR RESEARCH USE ONLY! Not to be used on humans.