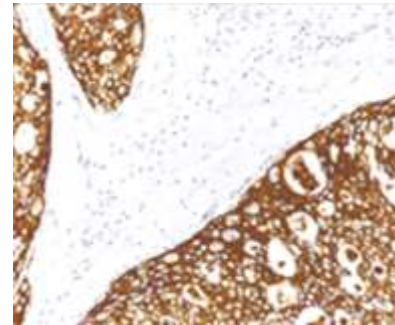


Anti- Her2/Neu Antibody (IHC002)

CATALOG NO:	A1519-50
ALTERNATIVE NAMES:	HER2, NEU, Tyrosine kinase-type cell surface receptor HER2, Proto-oncogene c-ErbB-2, Proto-oncogene Neu, Metastatic lymph node gene 19 protein, MLN 19, NGL, ERBB2
AMOUNT:	50 µl
IMMUNOGEN:	Her2/Neu
HOST/ISOTYPE:	IgG2a
CLONALITY:	Monoclonal
CLONE:	IHC002
MOL WEIGHT:	185 kDa
SPECIES REACTIVITY:	Human
PURIFICATION:	Protein A/G purification
FORM:	Liquid
FORMULATION:	Tris Buffer, pH 7.3 - 7.7, with 1% BSA and <0.1% Sodium Azide
STORAGE CONDITIONS:	Shipped at 4°C. For long term storage store at 4°C. Do not freeze.
DESCRIPTION:	The Her2/Neu (c-ErbB-2) proto-oncogene is a transmembrane receptor tyrosine kinase that is clinically indicated in a number of carcinomas. Overexpression of the c-ErbB-2 protein has been associated with ductal breast cancer, as well as pulmonary and gastric adenocarcinomas. A correlation between Her2 and p53 has also been documented, as overexpression of both proteins has been associated with early invasion and metastasis in bladder cancer.
APPLICATION:	IHC: 1:100 - 1:200

Note: This information is only intended as a guide. The optimal dilutions must be determined by the user.



Formalin-fixed, paraffin-embedded Breast tissue stained with Her2/Neu Antibody (IHC002)

RELATED PRODUCTS:

- Anti-HER2 (c-erbB-2), Rabbit Monoclonal Antibody (**Cat. No. A1134**)
- HER2/ErbB2 Antibody (**Cat. No. 3783**)
- Human CellExp™ ErbB2 / HER2 / CD340, human recombinant (**Cat. No. 7397**)
- HER2, Active (**Cat. No. 7762**)
- HER2, Active, Human Recombinant (**Cat. No. 8011**)
- HER2/ErbB2 (Human) ELISA Kit (**Cat. No. E4357**)
- Human CellExp™ ErbB3/HER3, human recombinant (**Cat. No. 7400**)
- ErbB4/HER4 (His Tagged), Human Recombinant (**Cat. No. 7773**)

FOR RESEARCH USE ONLY! Not to be used on humans.