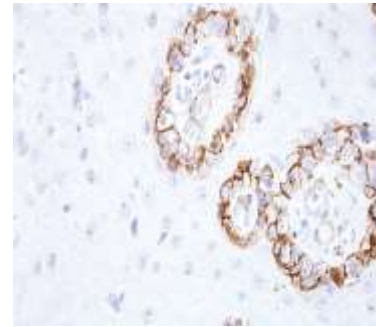


## Anti- KBA.62 Antibody (IHC062)

<b>CATALOG NO:</b>	A1520-50
<b>ALTERNATIVE NAMES:</b>	Melan-A, KBA.62, Anti-KBA.62, Melanoma Associated Antigen, Melanoma Associated Antigen (KBA.62) Antibody, Anti- KBA.62 (Melanoma Associated Antigen) Antibody
<b>AMOUNT:</b>	50 µl
<b>IMMUNOGEN:</b>	KBA.62
<b>HOST/ISOTYPE:</b>	IgG1
<b>CLONALITY:</b>	Monoclonal
<b>CLONE:</b>	IHC062
<b>MOL WEIGHT:</b>	140 kDa
<b>SPECIES REACTIVITY:</b>	Human
<b>PURIFICATION:</b>	Protein A/G purification
<b>FORM:</b>	Liquid
<b>FORMULATION:</b>	Tris Buffer, pH 7.3 - 7.7, with 1% BSA and <0.1% Sodium Azide
<b>STORAGE CONDITIONS:</b>	Shipped at 4°C. For long term storage store at 4°C. <b>Do not freeze.</b>
<b>DESCRIPTION:</b>	KBA.62, also known as Melanoma Associated Antigen, is used to detect an antigen present in melanocytic tumors, such as melanomas, due to its proven sensitivity and specificity. The antibody can also be used to distinguish between junctional nevus and intradermal nevus cells and fetal melanocytes versus normal adult melanocytes. Studies have shown KBA.62 to be highly useful in differentiating between metastatic amelanotic melanoma and a number of poorly differentiated carcinomas, large cell lymphomas, sarcomas, and spindle cell carcinomas.
<b>APPLICATION:</b>	IHC: 1:100 - 1:200

**Note:** This information is only intended as a guide. The optimal dilutions must be determined by the user.



Formalin-fixed, paraffin-embedded Melanoma stained with KBA.62 (Melanoma Associated Antigen) Antibody (IHC062)

### RELATED PRODUCTS:

- MART-1/Melan-A, mouse recombinant (**Cat. No. 4824**)
- Anti-MART-1/Melan-A Antibody (**Cat. No. A1344**)
- MART-1/Melan-A, human recombinant (**Cat. No. 4823**)
- MAGE-1, human recombinant (**Cat. No. 4820**)
- MART-1/Melan-A Antibody (**Cat. No. 5823**)

**FOR RESEARCH USE ONLY! Not to be used on humans.**