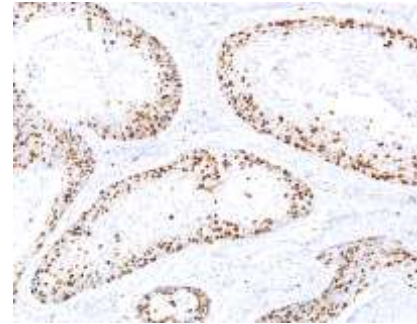


Anti- Ki-67 Antibody (IHC067)

CATALOG NO:	A1521-50
ALTERNATIVE NAMES:	Proliferation marker protein Ki-67, Ki-67, Ki67, KI-67, MKI67
AMOUNT:	50 µl
IMMUNOGEN:	Ki-67
CLONALITY:	Monoclonal
CLONE:	IHC067
MOL WEIGHT:	359 kDa
SPECIES REACTIVITY:	Human
PURIFICATION:	Protein A/G purification
FORM:	Liquid
FORMULATION:	Tris Buffer, pH 7.3 - 7.7, with 1% BSA and <0.1% Sodium Azide
STORAGE CONDITIONS:	Shipped at 4°C. For long term storage store at 4°C. Do not freeze.
DESCRIPTION:	Ki-67 is a nuclear, non-histone protein that is expressed only during active phases of the cell cycle (G1, S, G2 and M), but not in the resting phases (G0 and G1 early phase). Although the antigen has also been associated with ribosomal RNA transcription, it is strongly linked to cell proliferation and has thus been indicated as an effective marker in grading the proliferation rate of tumors, including those of the brain, breast, cervix, and prostate.
APPLICATION:	IHC: 1:100 - 1:200

Note: This information is only intended as a guide. The optimal dilutions must be determined by the user.



Formalin-fixed, paraffin-embedded cervical cancer tissue stained with Ki-67 Antibody (IHC067)

RELATED PRODUCTS:

- Anti-Ki67 Rabbit Monoclonal Antibody (**Cat. No. A1135**)
- MKI67 (Human) ELISA Kit (**Cat. No. E4308**)
- Phospho-NIFK (Thr234) Antibody (**Cat. No. A1157**)
- D-Lactate ELISA Kit (**Cat. No. E4356**)

FOR RESEARCH USE ONLY! Not to be used on humans.