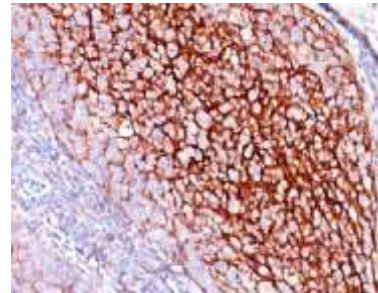


Anti-CD35 / CR1 Antibody (E11)

CATALOG NO:	A1522-100
ALTERNATIVE NAMES:	C3 binding protein, C3b/C4b receptor, C3BR, C4BR, Complement Component (3b/4b) receptor 1 including Knops blood group system, Complement receptor type 1, KN, Knops blood group antigen
AMOUNT:	100 µg
IMMUNOGEN:	Intact human monocytes
HOST/ISOTYPE:	Mouse / IgG1, kappa
CLONALITY:	Monoclonal
CLONE:	E11
MOL WEIGHT:	210-220 kDa
SPECIES REACTIVITY:	Human, Baboon, Cynomolgus Monkey, Rhesus Monkey
PURIFICATION:	Protein A/G purified
FORM:	Liquid
FORMULATION:	Supplied in 10 mM PBS with 0.05% BSA & 0.05% azide
STORAGE CONDITIONS:	Shipped at 4°C. Long term storage at -20°C.
DESCRIPTION:	Recognizes a protein of 210-220 kDa, which is identified as the complement receptor 1 (CR1)/CD35. This mAb is specific for a site in CR1 that is distal from the C3b-binding site, so that it is unable to block CR1 activity. This mAb is highly specific to CR1 and shows no cross-reaction with CR2. The primary function of CR1 is to serve as the cellular receptor for C3b and C4b, the most important components of the complement system leading to clearance of foreign macromolecules. The Knops blood group system is a system of antigens located on this protein. Follicular dendritic cells (FDC) are restricted to the B-cell regions of secondary lymphoid follicles. They are CD21+/CD35+/CD1a-. This mAb labels follicular dendritic cells and follicular dendritic cell sarcoma.
APPLICATION:	FC: 0.5-1 µg/1X10 ⁶ cells in 0.1ml IF: 1-2 µg/ml IHC: 0.5-1 µg/ml for 30 minutes at RT (Staining of formalin-fixed tissues requires boiling tissue sections in 10mM citrate buffer, pH 6.0, for 10-20 min followed by cooling at RT for 20 minutes)

Note: This information is only intended as a guide. The optimal dilutions must be determined by the user.



Formalin-fixed, paraffin-embedded human Tonsil stained with CD35 Antibody (E11).

RELATED PRODUCTS:

- TDGF1, human recombinant (**Cat. No. 4335**)
- Raf1 Antibody (**Cat. No. 3116**)
- CD46, human recombinant (**Cat. No. 7314**)

FOR RESEARCH USE ONLY! Not to be used on humans.