

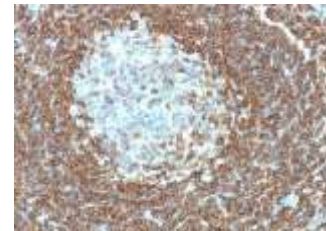
Anti-CD3e Antibody (C3e/1308)

CATALOG NO:	A1523-100
ALTERNATIVE NAMES:	CD 3E, CD3 epsilon, CD3 TCR complex, CD3E, CD3e antigen epsilon polypeptide (TiT3 complex), T cell antigen receptor complex epsilon subunit of T3, T-cell surface antigen T3/Leu-4 epsilon chain, T-cell surface glycoprotein CD3 epsilon chain, T3E, TCRE, TiT3 complex
AMOUNT:	100 µg
IMMUNOGEN:	Recombinant human CD3e fragment (aa 23-119)
HOST/ISOTYPE:	Mouse / IgG2b, kappa
CLONALITY:	Monoclonal
CLONE:	C3e/1308
MOL WEIGHT:	20 kDa
SPECIES REACTIVITY:	Human
PURIFICATION:	Purified from rabbit anti-serum by Protein A
FORM:	Liquid
FORMULATION:	Supplied in 10 mM PBS with 0.05% BSA & 0.05% azide
STORAGE CONDITIONS:	Shipped at 4°C. Long term storage at -20°C.

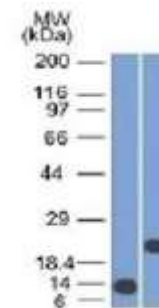
DESCRIPTION: Recognizes the γ -chain of CD3, which consists of five different polypeptide chains (designated as gamma, delta, epsilon, zeta, and eta) with MW ranging from 16-28kDa. The CD3 complex is closely associated at the lymphocyte cell surface with the T cell antigen receptor (TCR). Reportedly, CD3 complex is involved in signal transduction to the T cell interior following antigen recognition. The CD3 antigen is first detectable in early thymocytes and probably represents one of the earliest signs of commitment to the T cell lineage. In cortical thymocytes, CD3 is predominantly intra-cytoplasmic. However, in medullary thymocytes, it appears on the T cell surface. CD3 antigen is a highly specific marker for T cells, and is present in majority of T cell neoplasms.

APPLICATION: FC: 0.5-1 µg/1X10⁶ cells
 IF: 1-2 µg/ml
 WB: 1-2 µg/ml for 60 minutes at RT
 IHC: 1-2 µg/ml for 30 minutes at RT
 (Staining of formalin-fixed tissues requires boiling tissue sections in 10mM citrate buffer, pH 6.0, for 10-20 min followed by cooling at RT for 20 minutes)

Note: This information is only intended as a guide. The optimal dilutions must be determined by the user.



Formalin-fixed, paraffin-embedded human Tonsil stained with CD3e Antibody (C3e/1308).



Western Blot of recombinant CD3e and Jurkat Cell Lysate using CD3e Antibody (C3e/1308)

RELATED PRODUCTS:

- Anti-CD3E Antibody (**Cat. No. A1386**)
- CD3d Antibody (**Cat. No. 6963**)
- Human CellExp™ CD3 epsilon & CD3 delta Heterodimer, Human Recombinant (**Cat. No. P1183**)
- CD3 FITC Monoclonal Antibody (Clone OKT3) (**Cat. No. 6952**)
- QuickDetect™ CD3 (Human) ELISA Kit (**Cat. No. K4420**)
- CD3E, human recombinant (**Cat. No. 7342**)

FOR RESEARCH USE ONLY! Not to be used on humans.