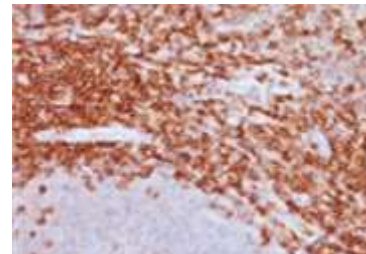


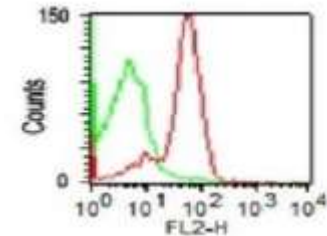
Anti-CD43 Antibody (DF-T1)

CATALOG NO:	A1524-100
ALTERNATIVE NAMES:	Galactoglycoprotein, GALGP, GPL115, Leukocyte sialoglycoprotein, Leukosialin, LSN, Sialophorin, SPN
AMOUNT:	100 µg
IMMUNOGEN:	Myeloblastic KG1 cells
HOST/ISOTYPE:	Mouse / IgG1, kappa
CLONALITY:	Monoclonal
CLONE:	DF-T1
MOL WEIGHT:	95, 115, or 135 kDa
SPECIES REACTIVITY:	Human
PURIFICATION:	Protein A/G purified
FORM:	Liquid
FORMULATION:	Supplied in 10 mM PBS with 0.05% BSA & 0.05% azide
STORAGE CONDITIONS:	Shipped at 4°C. Long term storage at -20°C.
DESCRIPTION:	This antibody recognizes a cell surface glycoprotein of 95/115/135 kDa (depending upon the extent of glycosylation), identified as CD43. 70-90% of T-cell lymphomas and from 22-37% of B-cell lymphomas express CD43. No reactivity has been observed with reactive B-cells. So a B-lineage population that co-expresses CD43 is highly likely to be a malignant lymphoma, especially a low-grade lymphoma, rather than a reactive B-cell population. When CD43 antibody is used in combination with anti-CD20, effective immunophenotyping of the lymphomas in formalin-fixed tissues can be obtained. Co-staining of a lymphoid infiltrate with anti-CD20 and anti-CD43 argues against a reactive process and favors a diagnosis of lymphoma.
APPLICATION:	FC: 0.5-1 µg/1X10 ⁶ cells in 0.1ml IF: 1-2 µg/ml IHC: 0.5-1 µg/ml for 30 minutes at RT (Staining of formalin-fixed tissues requires boiling tissue sections in 10mM citrate buffer, pH 6.0, for 10-20 min followed by cooling at RT for 20 minutes)

Note: This information is only intended as a guide. The optimal dilutions must be determined by the user.



Formalin-fixed, paraffin-embedded human Spleen stained with CD43 Antibody (DF-T1).



FACS Analysis of human PBMC with CD43 Monoclonal Antibody (DF-T1) (red) or isotype control (green).

RELATED PRODUCTS:

- Anti-CD20 / MS4A1 Antibody (SPM618) (Cat. No. A1480)
- PSGL-1 Antibody (Cat. No. 6657)
- Anti-CD20 Antibody (2F4) (Cat. No. A1385)
- Anti-CD47 Antibody (Cat. No. A1387)
- Anti-CD106 / VCAM1 Antibody (1.4C3) (Cat. No. A1470)
- Anti-CD146 Rabbit Monoclonal Antibody (Cat. No. A1122)
- Anti-CD164 Antibody (Cat. No. A1242)
- Anti-CD223 (LAG3) Antibody (Cat. No. A1067)
- Anti-CD160 Antibody (Cat. No. A1072)
- Anti-CD146 Rabbit Monoclonal Antibody (Cat. No. A1122)

FOR RESEARCH USE ONLY! Not to be used on humans.