

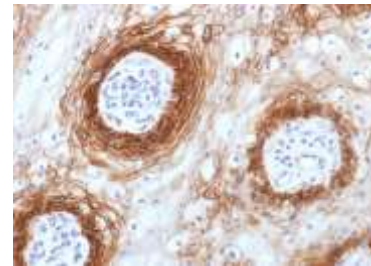
Anti-CD44v6 Antibody (Clone CD44v6/1246)

CATALOG NO:	A1527-100
ALTERNATIVE NAMES:	LHR; BA-1; chondroitin sulfate proteoglycan 8 (CSPG8); Epican; Extracellular Matrix Receptor III (ECM III); GP90 Lymphocyte Homing Adhesion Receptor; HCAM; HCELL; hematopoietic cell E- and L-selectin ligand; Heparan Sulfate Proteoglycan; Hermes Antigen; HAS; HUTCH I; Hyaluronate Receptor; Indian blood group; Inlu Related p80 Glycoprotein; Ly 24; MDU2; MDU3; MIC4; MUTCH I; Phagocytic Glycoprotein 1 (PGP-1)
AMOUNT:	100 µg
IMMUNOGEN:	Recombinant fragment corresponding to the v6 domain of human CD44 (exact sequence is proprietary)
HOST/ISOTYPE:	Mouse / IgG2a, kappa
CLONALITY:	Monoclonal
CLONE:	CD44v6/1246
MOL WEIGHT:	80-95 kDa
SPECIES REACTIVITY:	Human
PURIFICATION:	Protein A/G purification
FORM:	Liquid
FORMULATION:	Supplied in 10 mM PBS with 0.05% BSA & 0.05% azide
STORAGE CONDITIONS:	Shipped at 4°C. Long term storage at -20°C.
DESCRIPTION:	This antibody recognizes an epitope encoded by exon v6 on the variant portion of human CD44. The CD44 molecule belongs to a family of cellular adhesion molecules found on a wide range of normal and malignant cells in epithelial, mesothelial and hemopoiesis tissues. CD44 is a single gene with 20 exons, of which 10 are normally expressed to encode the basic CD44 (H-CAM) molecule. The additional 10 exons (v1 to v10) are only expressed by alternative splicing of the nuclear RNA. The expression of specific cell adhesion molecule CD44 splice variants has been reported to be associated with metastasis in certain human malignancies.
APPLICATION:	FC: 0.5-1 µg/1X10 ⁶ cells IF: 0.5-1 µg/ml IHC: 0.5-1 µg/ml for 30 minutes at RT (Staining of formalin-fixed tissues requires boiling tissue sections in 10 mM citrate buffer, pH 6.0, for 10-20 min followed by cooling at RT for 20 minutes)

Note: This information is only intended as a guide. The optimal dilutions must be determined by the user.



Formalin-fixed, paraffin-embedded human Cervical Carcinoma stained with CD44v6 Antibody (CD44v6/1246)



Formalin-fixed, paraffin-embedded human Tongue Carcinoma stained with CD44v6 Antibody (CD44v6/1246)

RELATED PRODUCTS:

- Anti-CD44v4 Antibody (Clone CD44v4/1219) (Cat. No. A1526)
- Anti-human CD44 antibody (Cat. No. A1505)
- Anti-CD44 Antibody (Hermes-3) (Cat. No. A1078)
- Anti-CD44 / HCAM Std. Antibody (HCAM/918) (Cat. No. A1525)
- CD44 (Human) ELISA Kit (Cat. No. K4178)
- HCAM Antibody (Cat. No. 3393)
- Human CellExp™ LYVE-1, mouse recombinant (Cat. No. P1017)

FOR RESEARCH USE ONLY! Not to be used on humans.