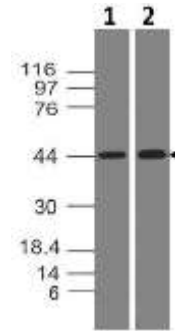


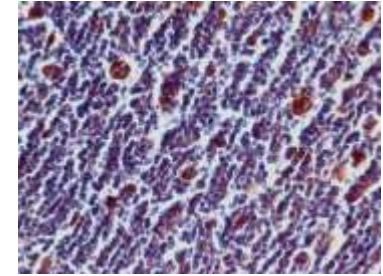
Anti-PD-L1 Monoclonal Antibody (Clone: ABM5F25)

| | |
|----------------------------|--|
| CATALOG NO: | A1537-50 |
| ALTERNATIVE NAMES: | CD274,B7H1,PDCD1L1,PDCD1LG1,PDL1 |
| IMMUNOGEN: | A partial length recombinant protein of PD-L1 (amino acid 13-224) was used as the immunogen |
| AMOUNT: | 50 µg |
| CLONALITY: | Monoclonal |
| CLONE: | ABM5F25 |
| ISOTYPE: | Mouse IgG2b, Kappa |
| SPECIES REACTIVITY: | Human |
| FORM: | Liquid |
| FORMULATION: | 0.5mg/ml in Supplied in PBS containing 0.05% BSA and 0.05% Sodium azide. |
| STORAGE CONDITIONS: | Store at 4°C, stable for 6 months. For long-term storage, store at -20°C. Avoid repeated freeze and thaw cycles |
| PURIFICATION: | Protein G Chromatography |
| DESCRIPTION: | PD-L1 (CD274/B7-H1) is a critical membrane-bound costimulatory molecule belongs to the B7 superfamily that inhibits immune responses through its receptor, PD-1 and PD-L1 play a key role in the pathogenesis of inflammatory diseases (programmed death 1). It is widely expressed in the mononuclear phagocyte system (MPS), may co-stimulate T cells and regulates inflammatory responses. PD-L1 exerts inflammation regulatory functions via a negative co-stimulatory effect on T cell functions to inhibit cytokine secretion, facilitate apoptosis of activated T cells and induce T cell anergy. Aberrant expression and dysregulation of CD274 have been reported during bacterial infection, inflammation and in numerous autoimmune diseases. |
| APPLICATION: | WB: 2-4 µg/ml; FACS: 0.5-1 µg/10 ⁶ cells; IHC: 5-10 µg/ml |

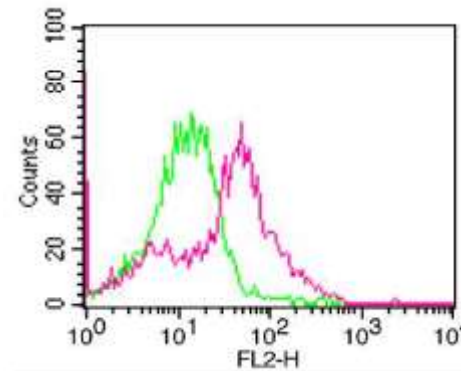
Note: This information is only intended as a guide. The optimal dilutions must be determined by the user.



Western Blot analysis of PD-L1 with 2µg/ml of **A1537** on (1)Daudi and (2) HepG2 cell lysates



IHC analysis of PD-L1 in Hodgkin's Lymphoma tissue with 5µg/ml of **A1537**



FACS analysis of PD-L1 on 3 day-PHA-treated human PBMC cells with **A1537** at 1 µg/10⁶ cells. Green represents Isotype control, Red represents anti-PDL1 antibody. Goat Anti-mouse PE conjugate was used as secondary antibody.

RELATED PRODUCTS

- PD-L1 /CD274, Human Recombinant (**Cat. No. P1023-10, -50**)
- Human CellExp™ PD-L1 /CD274 /B7-H1, mouse recombinant (**Cat. No. P1023-10, -50**)
- PD-L1/CD274 (Human) ELISA Kit (**Cat. No. K4155-100**)
- QuickDetect™ PD-L1/B7-H1 (Human) ELISA Kit (**Cat. No. K4416-100**)
- Anti-PD-L1 Antibody (**Cat. No. A1454-30, -100**)
- Anti-PD-L1 (Atezolizumab), humanized Antibody (**Cat. No. A1305-100**)
- PD-1/PD-L1 Inhibitor 1 (**Cat. No. B1213-5, -25**)

FOR RESEARCH USE ONLY! Not to be used on humans.