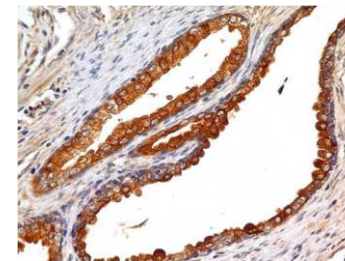
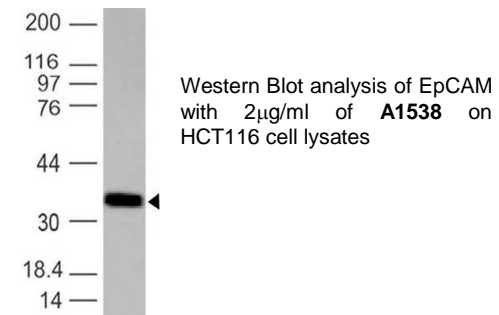


## Anti-EpCAM Monoclonal Antibody (Clone: ABM2C92)

<b>CATALOG NO:</b>	A1538-50
<b>ALTERNATIVE NAMES:</b>	Epcam, Tacstd1, CD326 A partial length recombinant human EpCAM (amino acids 110-314) was used as the immunogen
<b>IMMUNOGEN:</b>	
<b>AMOUNT:</b>	50 µg
<b>CLONALITY:</b>	Monoclonal
<b>CLONE:</b>	ABM2C92
<b>ISOTYPE:</b>	Mouse IgG2b, Kappa
<b>SPECIES REACTIVITY:</b>	Human
<b>FORM:</b>	Liquid
<b>FORMULATION:</b>	0.5mg/ml in Supplied in PBS containing 0.05% BSA and 0.05% Sodium azide.
<b>STORAGE CONDITIONS:</b>	Store at 4°C, stable for 6 months. For long-term storage, store at -20°C. Avoid repeated freeze and thaw cycles
<b>PURIFICATION:</b>	Protein G Chromatography
<b>DESCRIPTION:</b>	EpCAM is a Mr 40,000, type I transmembrane glycoprotein that consists of two epidermal growth factor-like extracellular domains, a cysteine-poor region, a transmembrane domain, and a short cytoplasmic tail. EpCAM is encoded by the GA733-2 gene located on the long arm of chromosome 4. EpCAM has been described by various names, including those associated with monoclonal antibodies specific for the cell surface antigen (MH99, AUA1, MOC31, 323/A3, KS1/4, GA733, and HEA125) and cDNA clones used to define the antigen KS 1/4, EGP, EGP40, and GA733-2.
<b>APPLICATION:</b>	WB: 2-4 µg/ml; IHC: 5-10 µg/ml

**Note:** This information is only intended as a guide. The optimal dilutions must be determined by the user.



IHC analysis of EpCAM in human prostate tissue with 5µg/ml of **A1537**

### RELATED PRODUCTS

- Human CellExp™ EpCAM/CD326, human recombinant (**Cat. No. 7450-10, -50**)
- Ep-CAM (Human) ELISA Kit (**Cat. No. E4352-100**)

**FOR RESEARCH USE ONLY! Not to be used on humans.**