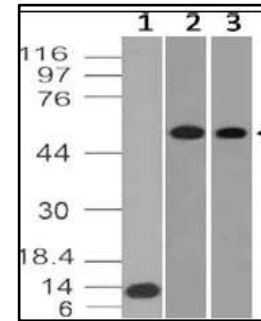


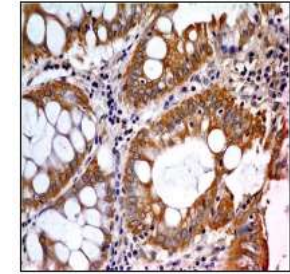
Anti-Glut-1 Monoclonal Antibody (Clone: ABM4G40)

CATALOG NO:	A1539-50
ALTERNATIVE NAMES:	SLC2A1, GLUT1
IMMUNOGEN:	A partial length recombinant Glut-1 protein (amino acid 200-492) was used as the immunogen
AMOUNT:	50 µg
CLONALITY:	Monoclonal
CLONE:	ABM4G40
ISOTYPE:	Mouse IgG2b, Kappa
SPECIES REACTIVITY:	Human
FORM:	Liquid
FORMULATION:	0.5mg/ml in Supplied in PBS containing 0.05% BSA and 0.05% Sodium azide.
STORAGE CONDITIONS:	Store at 4°C, stable for 6 months. For long-term storage, store at -20°C. Avoid repeated freeze and thaw cycles
PURIFICATION:	Protein G Chromatography
DESCRIPTION:	Glucose transporter 1 (Glut-1) also known as solute carrier family 2, facilitated glucose transporter member 1 (SLC2A1), is a uniporter protein. GLUT1 expression is correlated with FDG uptake by Extrahepatic bile duct (EHD) cancers. GLUT-1-deficiency syndrome is a treatable metabolic disorder caused by a mutation of mutation of SLC2A1 gene. The functional deficiency of the GLUT1 protein leads to an impaired glucose transport into the brain, resulting in neurologic disorders gene.
APPLICATION:	WB: 2-4 µg/ml; IHC: 5-10 µg/ml; FACS: 0.5µg/10 ⁶ cells

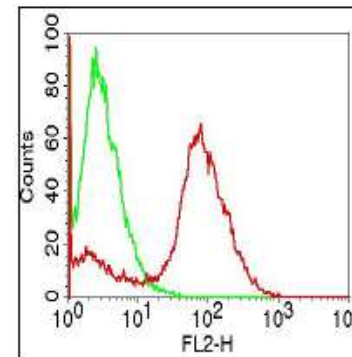
Note: This information is only intended as a guide. The optimal dilutions must be determined by the user.



Western Blot analysis of Glut-1 with 0.5 and 2µg/ml of **A1539** on (1) recombinant Glut-1, (2) human liver and (3) human ovary lysates respectively



IHC analysis of Glut-1 in human renal cell carcinoma with 5µg/ml of **A1539**



FACS analysis of Glut-1 in human PBMC using **A1539** at 0.5µg/10⁶ cells. Green represents Isotype control, Red represents anti-HMGB1 antibody. Goat Anti-mouse PE conjugate was used as secondary antibody

RELATED PRODUCTS

- Glucose Uptake Colorimetric Assay Kit (**Cat. No. K676-100**)
- Glucose Uptake Fluorometric Assay Kit (**Cat. No. K666-100**)
- Glucose Colorimetric/Fluorometric Assay Kit (**Cat. No. K606-100**)
- 2-NBDG Glucose Uptake Assay Kit (Cell-Based) (**Cat. No. K682-50**)
- GluTracker™ Glucose Uptake Assay Kit (Cell-Based) (**Cat. No. K681-50**)
- GLUT4 Polyclonal Antibody (**Cat. No. 3945-30, -100**)

FOR RESEARCH USE ONLY! Not to be used on humans.