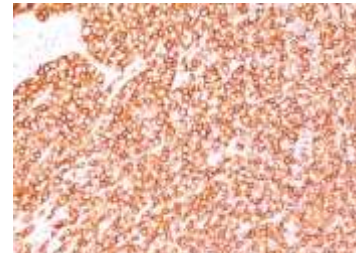


Anti-CD45RB Antibody (Clone BRA-11(same as BRA-11G))

CATALOG NO:	A1541-100
ALTERNATIVE NAMES:	B220, CD45R, GP180, Leukocyte common antigen (LCA), Loc, Ly-5, Lyt-4, Protein tyrosine phosphatase receptor type C (PTPRC), Receptor-type tyrosine-protein phosphatase C, T200 glycoprotein
AMOUNT:	100 µg
IMMUNOGEN:	Non-T, non-B CALLA positive ALL cell line REH (Leucocyte Workshop IV and V)
HOST/ISOTYPE:	Mouse / IgG1, kappa
CLONALITY:	Monoclonal
CLONE:	BRA-11 (same as BRA-11G)
MOL WEIGHT:	180-220 kDa
SPECIES REACTIVITY:	Human
PURIFICATION:	Protein A/G purification
FORM:	Liquid
FORMULATION:	Supplied in 10 mM PBS with 0.05% BSA & 0.05% azide
STORAGE CONDITIONS:	Shipped at 4°C. Long term storage at -20°C.
DESCRIPTION:	CD45R, also designated CD45 and PTPRC, has been identified as a transmembrane glycoprotein, broadly expressed among hematopoietic cells. Multiple isoforms of CD45R are distributed throughout the immune system according to cell type. These isoforms arise because of alternative splicing of exons 4, 5, and 6. The corresponding protein domains are characterized by the binding of monoclonal antibodies specific for CD45RA (exon 4), CD45RB (exon 5), CD45RC (exon 6) and CD45RO (exons 4 to 6 spliced out). The variation in these isoforms is localized to the extracellular domain of CD45R, while the intracellular domain is conserved. CD45RB is expressed on mature B-lymphocytes and the majority of lymphomas and leukemia's of B-cell origin.
APPLICATION:	FC: 0.5-1 µg/1X10 ⁶ cells in 0.1 ml IF: 0.5-1 µg/ml IHC: 0.5-1.0 µg/ml for 30 minutes at RT (Staining of formalin-fixed tissues requires boiling tissue sections in 10 mM citrate buffer, pH 6.0, for 10-20 min followed by cooling at RT for 20 minutes)

Note: This information is only intended as a guide. The optimal dilutions must be determined by the user.



Formalin-fixed, paraffin-embedded human Tonsil stained with CD45RB Antibody (BRA-11).

RELATED PRODUCTS:

- CD-45 Antibody (CT) **(Cat. No. 6734)**
- CD45 FITC Monoclonal Antibody (Clone HI30) **(Cat. No. 6958)**
- CD45RA FITC Monoclonal Antibody (Clone HI100) **(Cat. No. 6959)**
- CD45RO FITC Monoclonal Antibody (Clone UCHL1) **(Cat. No. 6960)**
- Human CellExp™ CD45, human recombinant **(Cat. No. P1015)**

FOR RESEARCH USE ONLY! Not to be used on humans.