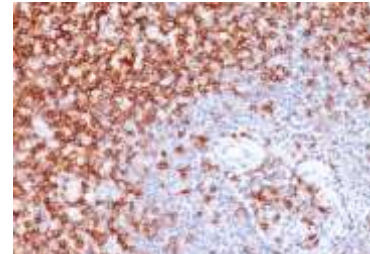
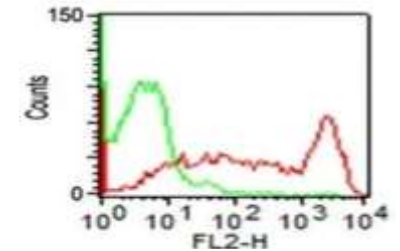


## Anti-CD45RO Antibody (Clone UCHL-1)

<b>CATALOG NO:</b>	A1542-100
<b>ALTERNATIVE NAMES:</b>	T200, GP180, LCA, Leukocyte Common Antigen, LY5, Receptor-type tyrosine-protein phosphatase C, T200 glycoprotein
<b>AMOUNT:</b>	100 µg
<b>IMMUNOGEN:</b>	Cultured human T-cells from an IL-2-dependent T-cell line (CA1)
<b>HOST/ISOTYPE:</b>	Mouse / IgG2a, kappa
<b>CLONALITY:</b>	Monoclonal
<b>CLONE:</b>	UCHL-1
<b>MOL WEIGHT:</b>	180-185 kDa
<b>SPECIES REACTIVITY:</b>	Human, Chimpanzee, Common Marmoset.
<b>PURIFICATION:</b>	Protein A/G purification
<b>FORM:</b>	Liquid
<b>FORMULATION:</b>	Supplied in 10 mM PBS with 0.05% BSA & 0.05% azide
<b>STORAGE CONDITIONS:</b>	Shipped at 4°C. Long term storage at -20°C.
<b>DESCRIPTION:</b>	This Antibody recognizes a 180-185 kDa protein, identified as isoform of leukocyte common antigen (CD45RO). The epitope recognized by this antibody is sensitive to neuraminidase digestion. This antibody reacts with mature activated T-cells, most thymocytes, and a sub-population of resting T-cells within both CD4 and CD8 subsets. It shows no reactivity with normal B or natural killer cells, but reacts with granulocytes and monocytes. Reportedly, it is useful to identify T-cell lymphomas and leukemia's. It rarely stains NK cells or B-cell lymphomas.
<b>APPLICATION:</b>	FC: 0.5-1 µg/1X10 <sup>6</sup> cells in 0.1 ml IF: 0.5-1 µg/ml IHC: 0.25-0.5 µg/ml for 30 minutes at RT (Staining of formalin-fixed tissues requires boiling tissue sections in 10 mM Citrate Buffer, pH 6.0, for 10-20 min followed by cooling at RT for 20 minutes)
	<b>Note: This information is only intended as a guide. The optimal dilutions must be determined by the user.</b>



Formalin-fixed, paraffin-embedded human Tonsil stained with CD45RO Antibody (UCHL-1).



Flow Cytometry of hPBMC using CD45RO Antibody (UCHL-1).

### RELATED PRODUCTS:

- CD-45 Antibody (CT) (Cat. No. 6734)
- CD45 FITC Monoclonal Antibody (Clone HI30) (Cat. No. 6958)
- CD45RA FITC Monoclonal Antibody (Clone HI100) (Cat. No. 6959)
- CD45RO FITC Monoclonal Antibody (Clone UCHL1) (Cat. No. 6960)
- Human CellExp™ CD45, human recombinant (Cat. No. P1015)
- Neuraminidase Activity Fluorometric Assay Kit (Cat. No. K732)

**FOR RESEARCH USE ONLY! Not to be used on humans.**