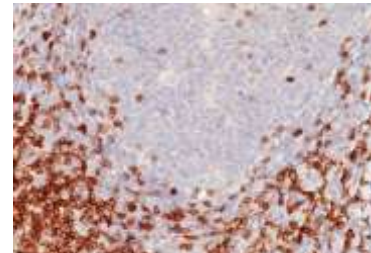


Anti-CD5 Antibody (Clone C5/473)

CATALOG NO:	A1543-100
ALTERNATIVE NAMES:	CD5 antigen (p56 62), LEU1, Ly12, LyA, Lymphocyte antigen T1/Leu-1, Lymphocyte glycoprotein T1/Leu1, T-cell surface glycoprotein CD5
AMOUNT:	100 µg
IMMUNOGEN:	Human CD5 recombinant protein
HOST/ISOTYPE:	Mouse / IgG1, kappa
CLONALITY:	Monoclonal
CLONE:	C5/473
MOL WEIGHT:	67 kDa
SPECIES REACTIVITY:	Human
PURIFICATION:	Protein A/G purification
FORM:	Liquid
FORMULATION:	Supplied in 10 mM PBS with 0.05% BSA & 0.05% azide
STORAGE CONDITIONS:	Shipped at 4°C. Long term storage at -20°C.
DESCRIPTION:	This Antibody recognizes a 67 kDa transmembrane protein, which is identified as CD5. The CD5 antigen is found on 95% of thymocytes and 72% of peripheral blood lymphocytes. In lymph nodes, the main reactivity is observed in T cell areas. Anti-CD5 is a pan T-cell marker that also reacts with a range of neoplastic B-cells, e.g. chronic lymphocytic leukemia/small lymphocytic lymphoma (CLL/SLL), mantle cell lymphoma, and a subset (~10%) of diffuse large B-cell lymphoma. CD5 aberrant expression is useful in making a diagnosis of mature T-cell neoplasms. Anti-CD5 detection is diagnostic in CLL/SLL within a panel of other B-cell markers, especially one that includes anti-CD23. Anti-CD5 is also very useful in differentiating among mature small lymphoid cell malignancies. In addition, anti-CD5 can be used in distinguishing thymic carcinoma (+) from thymoma (-). Anti-CD5 does not react with granulocytes or monocytes.
APPLICATION:	FC: 0.5-1 µg/1X10 ⁶ cells in 0.1 ml IF: 0.5-1 µg/ml IHC: 0.5-1.0 µg/ml for 30 minutes at RT (Staining of formalin-fixed tissues requires boiling tissue sections in 10 mM citrate buffer, pH 6.0, for 10-20 min followed by cooling at RT for 20 minutes)

Note: This information is only intended as a guide. The optimal dilutions must be determined by the user.



Formalin-fixed, paraffin-embedded human Tonsil stained with CD5 Antibody (C5/473)

RELATED PRODUCTS:

- Anti-CD1a / HTA1 Antibody (C1A/711) **(Cat. No. A1478)**
- Anti-CD3e Antibody (C3e/1308) **(Cat. No. A1523)**
- CD3d Antibody **(Cat. No. 6936)**
- CD3 FITC Monoclonal Antibody (Clone OKT3) **(Cat. No. 6952)**
- CD4 FITC Monoclonal Antibody (Clone RPA-T4) **(Cat. No. 6953)**
- CD5, human recombinant **(Cat. No. 7315)**
- CD4 Antibody **(Cat. No. 6937)**
- CD4 FITC Monoclonal Antibody (Clone RPA-T4) **(Cat. No. 6953)**

FOR RESEARCH USE ONLY! Not to be used on humans.