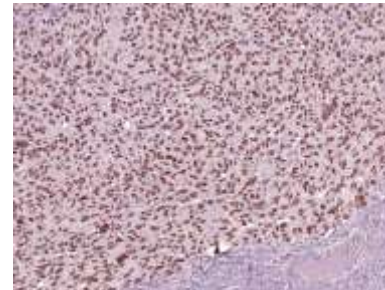


Anti-SOX-10 Antibody (IHC010)

CATALOG NO:	A1544-50
ALTERNATIVE NAMES:	SRY-Box 10, SRY (Sex Determining Region Y)-Box 10, SRY-Related HMG-Box Gene 10, Transcription Factor SOX-10, SOX 10, SOX-10, SOX-10, SRY-box containing gene 2, sex determining region Y box-2
AMOUNT:	50 µl
IMMUNOGEN:	SOX-10
HOST/ISOTYPE:	IgG2b, kappa
CLONALITY:	Monoclonal
CLONE:	IHC010
MOL WEIGHT:	50 kDa
SPECIES REACTIVITY:	Human
PURIFICATION:	Protein A/G purification
FORM:	Liquid
FORMULATION:	Tris Buffer, pH 7.3 - 7.7, with 1% BSA and <0.1% Sodium Azide
STORAGE CONDITIONS:	Shipped at 4°C. For long term storage store at 4°C. Do not freeze.
DESCRIPTION:	SRY (Sex Determining Region Y)-Box 10 (SOX-10), also known as transcription factor SOX-10, is a nuclear transcription factor that acts in regulation of embryonic development and in the specification and differentiation of cells of melanocytic lineage. SOX-10 is diffusely expressed in neurofibromas and schwannomas, and mutations in the SOX-10 gene are linked to Waardenburg-Shah and Waardenburg-Hirschsprung disease. Anti-SOX-10 has been shown to be sensitive for conventional, spindle, and desmoplastic melanoma, and has been used to detect metastatic melanoma and nodal capsular nevus in sentinel lymph nodes.
APPLICATION:	IHC: 1:100 - 1:200

Note: This information is only intended as a guide. The optimal dilutions must be determined by the user.



Formalin-fixed, paraffin-embedded
Melanoma stained with SOX-10
[IHC010]

RELATED PRODUCTS:

- Sox-2 Antibody (Clone # 57CT23.3.4) (**Cat. No. 6772**)
- Sox-2 Antibody (**Cat. No. 3889**)
- Sox-1 Antibody (**Cat. No. 3822**)
- Sox1 Blocking Peptide (**Cat. No. 3822BP**)
- Sox-2 Blocking Peptide (**Cat. No. 3889BP**)
- SOX4 Antibody (**Cat. No. 3168**)
- SOX2 (Human) Transcription Factor Activity Assay Kit (**Cat. No. E4338**)
- Sox2-TAT, human recombinant (**Cat. No. 7203**)
- Sox2, human recombinant (**Cat. No. 7202**)

FOR RESEARCH USE ONLY! Not to be used on humans.