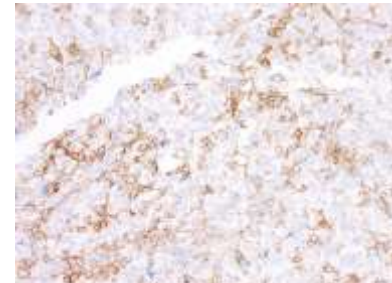


Anti-PD-L1 Antibody (IHC411)

CATALOG NO:	A1549-50
ALTERNATIVE NAMES:	Programmed cell death 1 ligand 1, PD-L1, PDCD1 ligand 1, programmed death ligand 1, B7 homolog 1, B7-H1, CD274
AMOUNT:	50 µl
IMMUNOGEN:	PD-L1
CLONALITY:	Monoclonal
CLONE:	IHC411
MOL WEIGHT:	33 kDa
SPECIES REACTIVITY:	Human
PURIFICATION:	Protein A/G purification
FORM:	Liquid
FORMULATION:	Tris Buffer, pH 7.3 - 7.7, with 1% BSA and <0.1% Sodium Azide
STORAGE CONDITIONS:	Shipped at 4°C. For long term storage store at 4°C. Do not freeze.
DESCRIPTION:	Programmed Death-Ligand 1 (PD-L1), also known as CD274 or B7 Homolog 1 (B7-H1), is a transmembrane protein involved in suppressing the immune system and rendering tumor cells resistant to CD8+ T cell-mediated lysis through binding of the Programmed Death-1 (PD-1) receptor. Overexpression of PD-L1 may allow cancer cells to evade the actions of the host immune system. In renal cell carcinoma, upregulation of PD-L1 has been linked to increased tumor aggressiveness and risk of death, and, in ovarian cancer, higher expression of this protein lead to significantly poorer prognosis. PD-L1 has also been linked to systemic lupus erythematosus and cutaneous melanoma. When considered in adjunct with CD8+ tumor-infiltrating lymphocyte density, expression levels of PD-L1 may be a useful predictor of multiple cancer types, including stage III non-small cell lung cancer, hormone receptor negative breast cancer, and sentinel lymph node melanoma.
APPLICATION:	IHC: 1:100 - 1:200

Note: This information is only intended as a guide. The optimal dilutions must be determined by the user.



Formalin-fixed, paraffin-embedded lung tissue stained with PD-L1 (IHC411)

RELATED PRODUCTS:

- Anti-PD-L1 Antibody (**Cat. No. A1454**)
- Anti-PD-L1 (Atezolizumab), Humanized Antibody (**Cat. No. A1305**)
- Anti-PD-L1 Monoclonal Antibody (Clone: ABM5F25) (**Cat. No. A1537**)
- Anti-PD-1 Antibody (**Cat. No. A1384**)
- Human CellExp™ PD-L1 /CD274 /B7-H1, mouse recombinant (**Cat. No. 7428**)
- Human CellExp™ PD-1/PDCD1, C-Fc+His Tag, Human recombinant (**Cat. No. P1264**)
- Human CellExp™ PD-1 /PDCD1, mouse recombinant (Cat. No. 7499)
- Human CellExp™ PD-1 /PDCD1, C-Fc Tag, mouse recombinant (Cat. No. 7503)
- Human CellExp™ PD-1 / PDCD1 Protein, mouse recombinant (Cat. No. P1086)
- PD-1/PD-L1 Inhibitor 2 (**Cat. No. B1050**)
- PD-1/PD-L1 Inhibitor 1 (**Cat. No. B1213**)
- PD-L1 /CD274, Human Recombinant (**Cat. No. P1023**)
- PD-L1/CD274 (Human) ELISA Kit (**Cat. No. K4155**)
- QuickDetect™ PD-L1/B7-H1 (Human) ELISA Kit (**Cat. No. K4416**)

FOR RESEARCH USE ONLY! Not to be used on humans.