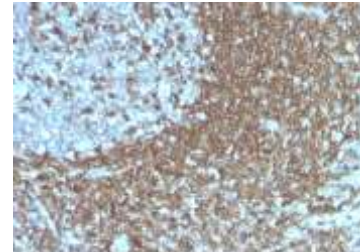


Anti-CD50 / ICAM-3 Antibody (Clone 186-2G9)

| | |
|----------------------------|--|
| CATALOG NO: | A1551-100 |
| ALTERNATIVE NAMES: | Intercellular adhesion molecule 3, ICAM-3, CDw50, ICAM-R, CD50, ICAMR |
| AMOUNT: | 100 µg |
| IMMUNOGEN: | Stimulated human leukocytes |
| HOST/ISOTYPE: | Mouse / IgG2b, kappa |
| CLONALITY: | Monoclonal |
| CLONE: | 186-2G9 |
| MOL WEIGHT: | 110-160 kDa |
| SPECIES REACTIVITY: | Human |
| PURIFICATION: | Protein A/G purification |
| FORM: | Liquid |
| FORMULATION: | Supplied in 10 mM PBS with 0.05% BSA & 0.05% azide |
| STORAGE CONDITIONS: | Shipped at 4°C. Long term storage at -20°C. |
| DESCRIPTION: | Recognizes the D1 domain of an N-glycosylated glycoprotein of 120 kDa with intra-chain disulfide bonds, identified as CD50 or ICAM-3. CD50 is the major ligand for LFA-1 (CD11a/CD18) and may have signaling role to increase adhesion. It is expressed on thymocytes and T lymphocytes and is resistant to treatment with phosphatidylinositol (PI) phospholipase C. This mAb is excellent for staining of formalin/paraffin tissues. |
| APPLICATION: | FC: 0.5-1 µg/1X10 ⁶ cells in 0.1 ml IF: 0.5-1 µg/ml IHC: 0.5-1.0 µg/ml for 30 minutes at RT (Staining of formalin-fixed tissues requires boiling tissue sections in 10 mM citrate buffer, pH 6.0, for 10-20 min followed by cooling at RT for 20 minutes) |

Note: This information is only intended as a guide. The optimal dilutions must be determined by the user.



Formalin-fixed, paraffin-embedded human Tonsil stained with CD50 Antibody (186-2G9)

RELATED PRODUCTS:

- Anti-CD209 / DC-SIGN Antibody (C209/1781) (Cat. No. A1481)
- Anti-CD11a Antibody (CRIS-3) (Cat. No. A1472)
- CD54 (ICAM1) FITC Monoclonal Antibody (Clone 15.2) (Cat. No. 6961)
- ICAM-1, human recombinant (Cat. No. 7161)
- ICAM2, human recombinant (Cat. No. 7349)
- ICAM-1 Antibody (Cat. No. 3422R)
- ICAM-1 Blocking Peptide (Cat. No. 3422RBP)
- ICAM-2 Antibody (Cat.No.3926)
- ICAM-2 Blocking Peptide (Cat. No. 3926BP)
- ICAM-1 (human) ELISA Kit (Cat. No. K7161)
- ICAM-1 (mouse) ELISA Kit (Cat. No. K7162)
- Human CellExp™ ICAM1 /CD54, human recombinant (Cat. No. 7486)
- Human CellExp™ ICAM2 /CD102, human recombinant (Cat. No. 7487)

FOR RESEARCH USE ONLY! Not to be used on humans.