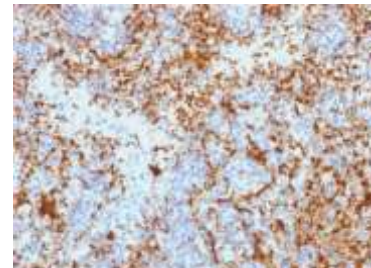


## Anti-CD61/ Integrin beta-3 / Platelet Glycoprotein IIIa Antibody (Clone Y2/51)

<b>CATALOG NO:</b>	A1556-100
<b>ALTERNATIVE NAMES:</b>	BDPLT2; GP3A; GPIIIa; GT; HPA 1; HPA 4; Integrin beta-3; ITGB3; NAIT; Platelet fibrinogen receptor beta subunit; Platelet glycoprotein IIIa; PTP
<b>AMOUNT:</b>	100 µg
<b>IMMUNOGEN:</b>	Phytohemagglutinin (PHA)-stimulated peripheral blood cells
<b>HOST/ISOTYPE:</b>	Mouse / IgG1, kappa
<b>CLONALITY:</b>	Monoclonal
<b>CLONE:</b>	Y2/51
<b>MOL WEIGHT:</b>	105 kDa & 90 kDa
<b>SPECIES REACTIVITY:</b>	Human
<b>PURIFICATION:</b>	Protein A/G purification
<b>FORM:</b>	Liquid
<b>FORMULATION:</b>	Supplied in 10 mM PBS with 0.05% BSA & 0.05% azide
<b>STORAGE CONDITIONS:</b>	Shipped at 4°C. Long term storage at -20°C.
<b>DESCRIPTION:</b>	Reacts with human integrin beta-3 (GPIIIa, vitronectin receptor beta chain). It associates with the V-chain (CD51) to form vitronectin receptor, or with the IIb-chain (CD41) to form the GpIIb/GpIIIa complex (CD41/CD61). The CD41/CD61 complex appears early in megakaryocyte maturation. The activated CD41/CD61 complex is a receptor for von Willebrand factor, soluble fibrinogen, fibronectin, vitronectin and thrombospondin. It plays a central role in platelet activation and aggregation. The CD51/CD61 is implicated in tumor metastasis and adenoviral infection. The antibody detects platelets in smears of blood and bone marrow, as well as megakaryocytes in frozen sections and cell smears. The antibody is useful for classification of megakaryoblastic leukemia.
<b>APPLICATION:</b>	FC: 0.5-1 µg/1X10 <sup>6</sup> cells in 0.1 ml

IF: 0.5-1 µg/ml  
 IHC: 1-2 µg/ml for 30 minutes at RT (Frozen & Formalin-fixed)  
 (Staining of formalin-fixed tissues requires boiling tissue sections in 10 mM Tris with 1 mM EDTA, pH 9.0, for 10-20 min followed by cooling at RT for 20 minutes)

**Note: This information is only intended as a guide. The optimal dilutions must be determined by the user.**



Formalin-fixed, paraffin-embedded human Spleen stained with CD61 Antibody (Y2/51).

### RELATED PRODUCTS:

- Anti-CD5 Antibody (Clone C5/473) (Cat. No. A1543)
- CD9 Antibody (Cat. No. 6938)
- Anti-CD11a Antibody (CRIS-3) (Cat. No. A1472)
- Anti-CD27 Antibody (LPFS2/1611) (Cat. No. A1483)
- Anti-CD35 / CR1 Antibody (E11) (Cat. No. A1522)
- Anti-CD43 Antibody (DF-T1) (Cat. No. A1524)
- Anti-CD54 / ICAM-1 Antibody (Clone W-CAM-1) (Cat. No. A1552)
- Human CellExp™ Integrin beta-5 Extracellular Domain (ED), Human Recombinant (Cat. No. P1172)
- Human CellExp™ Integrin alpha V beta 8, Human recombinant (P1122)
- PTP1B Antibody (Clone 107AT531) (Cat. No. 3122)
- Human CellExp™ Integrin alpha 6 beta 1 Heterodimer, Human Recombinant (Cat. No. P1203)

**FOR RESEARCH USE ONLY! Not to be used on humans.**