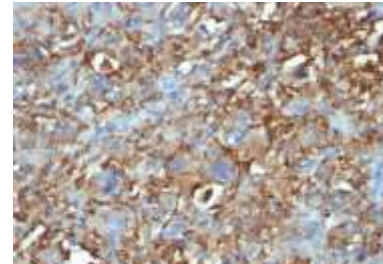


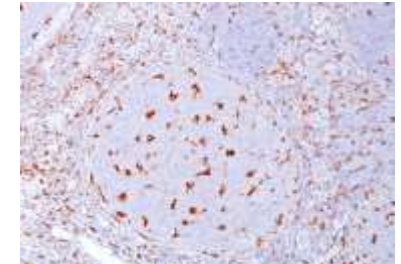
Anti-CD68 Antibody (C68/684)

CATALOG NO:	A1558-100
ALTERNATIVE NAMES:	GP110, LAMP4, Microsialin, Macrosialin, SCARD1, Scavenger Receptor Class D Member-1
AMOUNT:	100 µg
IMMUNOGEN:	Recombinant human CD68 protein
HOST/ISOTYPE:	Mouse / IgG1, kappa
CLONALITY:	Monoclonal
CLONE:	C68/684
MOL WEIGHT:	110 kDa
SPECIES REACTIVITY:	Human and Monkey
PURIFICATION:	Protein A/G purification
FORM:	Liquid
FORMULATION:	Supplied in 10 mM PBS with 0.05% BSA & 0.05% azide
STORAGE CONDITIONS:	Shipped at 4°C. Long term storage at -20°C.
DESCRIPTION:	This antibody recognizes a glycoprotein of 110 kDa, which is identified as CD68. It is important for identifying macrophages in tissue sections. It stains macrophages in a wide variety of human tissues, including Kupffer cells and macrophages in the red pulp of the spleen, in lamina propria of the gut, in lung alveoli, and in bone marrow. It reacts with myeloid precursors and peripheral blood granulocytes. It also reacts with plasmacytoid T cells, which are supposed to be of monocyte/macrophage origin. It shows strong granular cytoplasmic staining of chronic and acute myeloid leukemia and also reacts with rare cases of true histiocytic neoplasia. Lymphomas are negative or show few granules.
APPLICATION:	FC: 0.5-1 µg/1X10 ⁶ cells in 0.1 ml IF: 0.5-1 µg/ml IHC: 0.25-0.5 µg/ml for 30 minutes at RT (Staining of formalin-fixed tissues is enhanced by boiling tissue sections in 10 mM Citrate Buffer, pH 6.0, for 10-20 min followed by cooling at RT for 20 minutes)

Note: This information is only intended as a guide. The optimal dilutions must be determined by the user.



Formalin-fixed, paraffin-embedded human Histiocytoma stained with CD68 Antibody (C68/684).



Formalin-fixed, paraffin-embedded human Tonsil stained with CD68 Antibody (C68/684).

RELATED PRODUCTS:

- CD68, human recombinant (**Cat. No. 7343**)
- Human CellExp™ CD68 / SR-D1 Protein, Fc Tag (**Cat. No. 7880**)
- Human CellExp™ LAMP1/CD107a, human recombinant (**Cat. No. 7381**)
- LAMP-1 Antibody (Center) (**Cat. No. 5077**)
- LAMP2 Antibody (**Cat. No. 3900**)
- LAMP-2 Antibody (CT) (**Cat. No. 5078**)

FOR RESEARCH USE ONLY! Not to be used on humans.