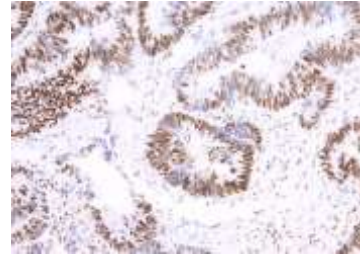


Anti-MLH1 Antibody

CATALOG NO:	A1561-100
ALTERNATIVE NAMES:	DNA mismatch repair protein Mlh1, MutL protein homolog 1, MLH1, COCA2
AMOUNT:	100 µg
IMMUNOGEN:	Recombinant Human MLH1
HOST/ISOTYPE:	IgG2a
CLONALITY:	Monoclonal
CLONE:	AHC0172
SPECIES REACTIVITY:	Human
PURIFICATION:	Protein A/G Affinity Purified
FORM:	Liquid
FORMULATION:	PBS, pH 7.4 with 0.02% Sodium Azide
STORAGE CONDITIONS:	This product is stable for several weeks at 4°C as an undiluted liquid. Dilute only prior to immediate use. For extended storage, aliquot contents and freeze at -20°C or below. Avoid cycles of freezing and thawing.
DESCRIPTION:	MutL Homolog 1 or MLH1 is a protein involved in the mismatch-repair pathway. Anti-MLH1 Antibody is ready to be used for detection of MLH1. This protein has been commonly associated with hereditary non-polyposis colorectal cancer thus is a useful marker for the disease. MLH1 is optimized when paired in an IHC panel with MSH6, MSH2, and PMS2.
APPLICATION:	IHC: 1:1000-1:3000

Note: This information is only intended as a guide. The optimal dilutions must be determined by the user.



Paraffin-embedded Human colon tissue stained with MLLH1 antibody (AHC0172).

RELATED PRODUCTS:

- MBD4 Antibody (Cat. No. 3056)
- MSH6 Antibody (Cat. No. 3879)
- MSH2 Antibody (Cat. No. 3429)
- PMS2 Antibody (Cat. No. 3455)
- TDG Antibody (Cat. No. 6157)

FOR RESEARCH USE ONLY! Not to be used on humans.