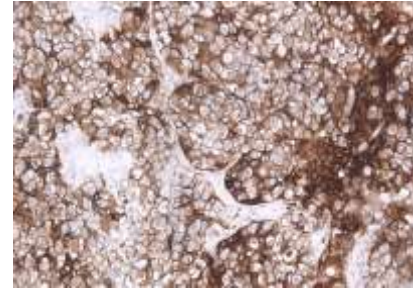


Anti-Podoplanin Antibody

CATALOG NO:	A1564-100
ALTERNATIVE NAMES:	Podoplanin, Aggrus, Glycoprotein 36, Gp36, PA2.26 antigen, T1-alpha, T1A, 29 kDa cytosolic podoplanin intracellular domain, PICD, PDPN, PSEC0003, PSEC0025
AMOUNT:	100 µg
IMMUNOGEN:	Recombinant Human Podoplanin
HOST/ISOTYPE:	IgG2a, kappa
CLONALITY:	Monoclonal
CLONE:	AHC0218
SPECIES REACTIVITY:	Human
PURIFICATION:	Protein A/G Affinity Purified
FORM:	Liquid
FORMULATION:	PBS, pH 7.4 with 0.02% Sodium Azide
STORAGE CONDITIONS:	This product is stable for several weeks at 4°C as an undiluted liquid. Dilute only prior to immediate use. For extended storage, aliquot contents and freeze at -20°C or below. Avoid cycles of freezing and thawing.
DESCRIPTION:	Anti-Podoplanin Antibody sensitively detects for the presence or absence of podoplanin. Podoplanin is a transmembrane mucoprotein specifically expressed in the endothelium of lymphatic capillaries, but is not present in blood vasculature, and is co-localized with VEGFR3/FLT4 in normal skin and kidney tissues. It can be used to detect lymphangioma, Kaposi's sarcoma, epithelioid mesothelioma, hemangioblastoma, seminoma, and/or angiosarcoma which may have undergone lymphatic differentiation.
APPLICATION:	IHC: 1:1000-1:3000

Note: This information is only intended as a guide. The optimal dilutions must be determined by the user.



Paraffin-embedded Human Ovary tissue stained with Podoplanin Antibody (AHC0218).

RELATED PRODUCTS:

- Anti-IDH1 Antibody (**Cat. No. A1383**)
- CD79B, human recombinant (**Cat. No. 7318**)
- Human CellExp™ CD36, human recombinant (**Cat. No. 7371**)
- Human Recombinant IDH1 (**Cat. No. 6379**)
- Isocitrate Dehydrogenase 1 R132H mutant, Human Recombinant (**Cat. No. P1070**)

FOR RESEARCH USE ONLY! Not to be used on humans.