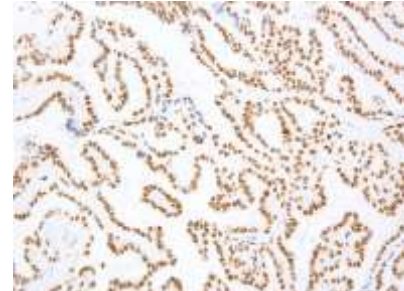


## Anti-TFE3 Antibody

|                            |  |
|----------------------------|--|
| <b>CATALOG NO:</b>         | A1565-100  |
| <b>ALTERNATIVE NAMES:</b>  | Transcription factor E3, Class E basic helix-loop-helix protein 33, bHLHe33, TFE3, BHLHE33   |
| <b>AMOUNT:</b>             | 100 µg   |
| <b>IMMUNOGEN:</b>          | Recombinant Human TFE3   |
| <b>HOST/ISOTYPE:</b>       | IgG1   |
| <b>CLONALITY:</b>          | Monoclonal   |
| <b>CLONE:</b>              | AHC0245  |
| <b>SPECIES REACTIVITY:</b> | Human  |
| <b>PURIFICATION:</b>       | Protein A/G Affinity Purified  |
| <b>FORM:</b>               | Liquid   |
| <b>FORMULATION:</b>        | PBS, pH 7.4 with 0.02% Sodium Azide  |
| <b>STORAGE CONDITIONS:</b> | This product is stable for several weeks at 4°C as an undiluted liquid. Dilute only prior to immediate use. For extended storage, aliquot contents and freeze at -20°C or below. Avoid cycles of freezing and thawing.   |
| <b>DESCRIPTION:</b>        | Transcription Factor E3 or TFE3 is a transcription factor that is involved in TGF-β signaling playing important roles for cell growth, proliferation and macrophage differentiation. Use of this antibody is most sensitive and specific for Xp11 translocation renal cell carcinomas; it is also a useful tool for recognizing alveolar soft part sarcoma (ASPS) as well. |
| <b>APPLICATION:</b>        | IHC: 1:1000-1:3000<br>WB: 1:500-1:1000   |

**Note:** This information is only intended as a guide. The optimal dilutions must be determined by the user.



Paraffin-embedded Human Thyroid Tissue stained with TFE3 antibody (AHC0245).

### RELATED PRODUCTS:

- Anti-KAP1/TIF1β Antibody (4E1-D12-F8) (Cat. No. A1312)
- Anti-TIF1 gamma Antibody (3H7-C8-B9) (Cat. No. A1313)
- Anti-c-Myc Oncoprotein Antibody (MYC275) (Cat. No. A1450)
- Anti- c-Myb Antibody (Cat. No. A1212)
- c-myc (Human) ELISA Kit (Cat. No. K4204)
- C-Myc Antibody (Cat. No. 6767)
- Phospho-c-Myc (Thr58) Antibody (Cat. No. A1266)

**FOR RESEARCH USE ONLY! Not to be used on humans.**